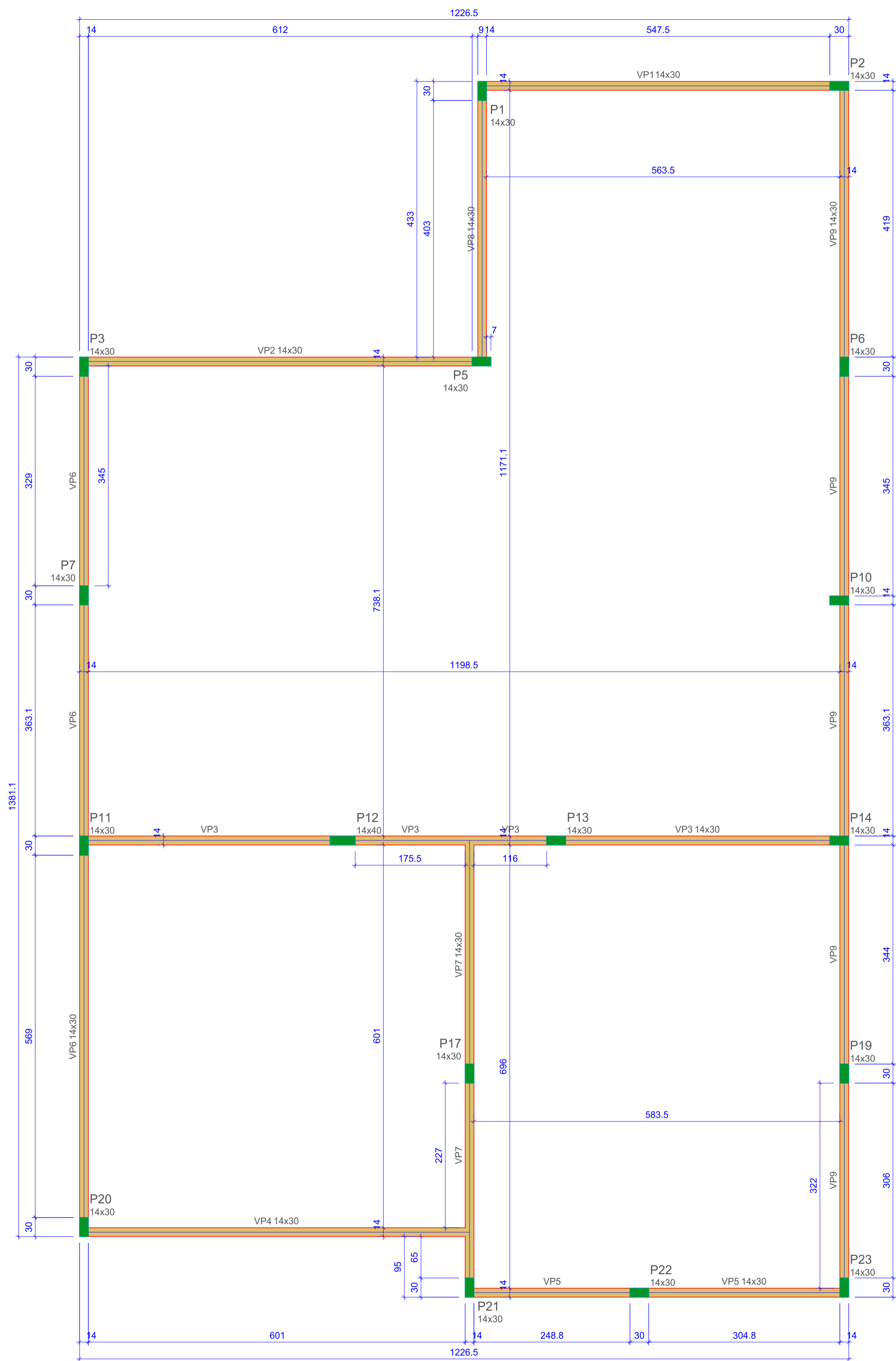


Forma do pavimento Térreo (Nível 10)

escala 1:50



Forma do pavimento Platibanda (Nível 580)

escala 1:50

Vigas			
Nome	Seção (cm)	Elevação (cm)	Nível (cm)
VT1	14x30	0	10
VT2	14x30	0	10
VT3	14x30	0	10
VT4	14x30	0	10
VT5	14x30	0	10
VT6	14x30	0	10
VT7	14x30	0	10
VT8	14x30	0	10
VT9	14x30	0	10
VT10	14x30	0	10
VT11	14x30	0	10
VT12	14x30	0	10
VT13	14x30	0	10
VT14	14x30	0	10
VT15	14x30	0	10
VT16	14x30	0	10
VT17	14x30	0	10
VT18	14x30	0	10
VT19	14x30	0	10
VT20	14x30	0	10
VT21	14x30	0	10

Vigas			
Nome	Seção (cm)	Elevação (cm)	Nível (cm)
VP1	14x30	0	580
VP2	14x30	0	580
VP3	14x30	0	580
VP4	14x30	0	580
VP5	14x30	0	580
VP6	14x30	0	580
VP7	14x30	0	580
VP8	14x30	0	580
VP9	14x30	0	580

Características dos materiais		
fck (kgf/cm²)	Ecs (kgf/cm²)	
250	241500	

Dimensão máxima do agregado = 19 mm

Características dos materiais		
fck (kgf/cm²)	Ecs (kgf/cm²)	
250	241500	

Dimensão máxima do agregado = 19 mm

Pilares			
Nome	Seção (cm)	Elevação (cm)	Nível (cm)
P1	20x30	0	10
P2	14x30	0	10
P3	14x30	0	10
P4	14x30	0	10
P5	14x30	0	10
P6	14x30	0	10
P7	14x30	0	10
P8	14x30	0	10
P9	14x30	0	10
P10	14x30	0	10
P11	14x30	0	10
P12	14x40	0	10
P13	14x30	0	10
P14	14x30	0	10
P15	14x30	0	10
P16	14x30	0	10
P17	14x30	0	10
P18	14x30	0	10
P19	14x30	0	10
P20	14x30	0	10
P21	14x30	0	10
P22	14x30	0	10
P23	14x30	0	10

Pilares			
Nome	Seção (cm)	Elevação (cm)	Nível (cm)
P1	14x30	0	580
P2	14x30	0	580
P3	14x30	0	580
P4	14x30	0	580
P5	14x30	0	580
P6	14x30	0	580
P7	14x30	0	580
P10	14x30	0	580
P11	14x30	0	580
P12	14x40	0	580
P13	14x30	0	580
P14	14x30	0	580
P17	14x30	0	580
P19	14x30	0	580
P20	14x30	0	580
P21	14x30	0	580
P22	14x30	0	580
P23	14x30	0	580

Legenda dos pilares
 Pilar que morre

Legenda das vigas e paredes
 Viga

Legenda dos pilares
 Pilar que morre
 Pilar que passa
 Pilar com mudança de seção

Legenda das vigas e paredes
 Viga



Projeto Estrutural

Projeto UBS Floresta do Araguaia - PA

PREFEITURA DE FLORESTA DO ARAGUAIA - PA

Autor do projeto: Lucas Oliveira Dantas
 Engenheiro Civil:
 CREA-PA 886058/D-PA

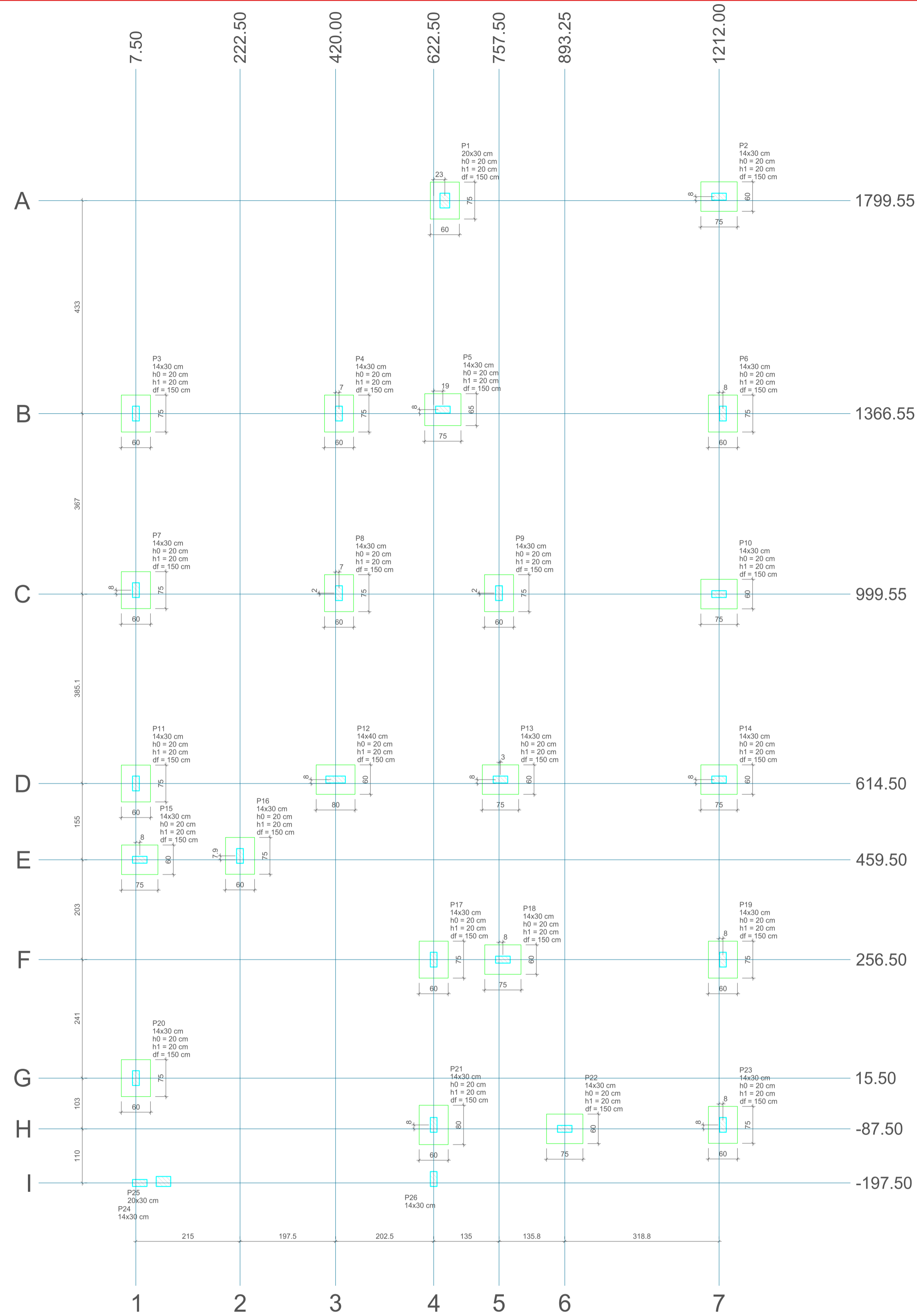
Conteúdo desta prancha: Áreas:

Locação

Data: Setembro de 2023

Escala: Indicadas

Prancha: 01/07



Planta de localização
escala 1:50

Nome	Seção (cm)	X (cm)	Y (cm)	Carga Max. (tf)	Carga Min. (tf)	Pilar				Fundação								
						Mx Máximo (kgf/m)	Mx Mínimo (kgf/m)	Fx Máximo (tf)	Fx Mínimo (tf)	Liado B (cm)	Liado H (cm)	Liado Ha (cm)	Liado Hb (cm)	Liado Hc (cm)	Liado Hd (cm)			
P1	20x30	645.50	1799.55	7.2	5.5	0	0	0	0	0.0	-0.9	0.8	0.0	60	75	20	20	150
P2	14x30	1212.00	1871.55	6.9	5.4	0	0	0	0	0.1	0.0	0.6	0.0	60	75	20	20	150
P3	14x30	7.50	1366.55	4.3	3.2	0	0	0	0	0.2	-0.5	0.3	-0.2	60	75	20	20	150
P4	14x30	427.00	1366.55	5.5	2.3	0	0	0	0	0.7	-0.4	0.4	-0.2	60	75	20	20	150
P5	14x30	645.50	1374.55	8.1	4.8	0	0	0	0	0.5	-1.4	0.0	-0.5	60	75	20	20	150
P6	14x30	1220.00	1366.55	6.8	5.6	0	0	0	0	0.7	0.0	0.0	-0.8	60	75	20	20	150
P7	14x30	7.50	1007.55	5.9	4.5	0	0	0	0	0.2	-0.6	0.5	-0.1	60	75	20	20	150
P8	14x30	427.00	1001.55	4.4	3.3	0	0	0	0	0.3	-0.2	0.1	-0.1	60	75	20	20	150
P9	14x30	757.50	1001.55	4.4	3.0	0	0	0	0	0.1	-0.6	0.2	-0.4	60	75	20	20	150
P10	14x30	1212.00	999.55	5.5	4.0	0	0	0	0	0.7	-0.2	0.3	-0.1	60	75	20	20	150
P11	14x30	7.50	614.50	5.9	4.3	0	0	0	0	0.0	-0.4	0.1	-0.6	60	75	20	20	150
P12	14x30	420.00	622.50	6.8	5.6	0	0	0	0	1.1	-0.7	0.0	-0.5	60	80	20	20	150
P13	14x30	757.50	622.50	7.0	5.6	0	0	0	0	0.7	-0.7	0.2	-0.1	60	75	20	20	150
P14	14x30	1212.00	622.50	6.1	4.5	0	0	0	0	0.6	-0.3	0.2	-0.3	60	75	20	20	150
P15	14x30	15.50	459.50	4.8	1.8	0	0	0	0	0.5	-0.5	0.3	-0.2	60	75	20	20	150
P16	14x30	222.50	459.50	7.9	0.3	0	0	0	0	0.4	0.4	0.0	-0.5	60	75	20	20	150
P17	14x30	622.50	256.50	6.5	1.5	0	0	0	0	0.4	-0.4	0.3	0.0	60	75	20	20	150
P18	14x30	785.50	256.50	5.5	1.2	0	0	0	0	0.6	-0.8	0.1	-0.3	60	75	20	20	150
P19	14x30	1220.00	256.50	4.5	4.1	0	0	0	0	0.4	0.0	0.5	-0.3	60	75	20	20	150
P20	14x30	7.50	15.50	8.6	7.5	0	0	0	0	0.0	-0.5	0.2	-0.5	60	75	20	20	150
P21	14x30	622.50	-79.50	9.3	7.3	0	0	0	0	0.3	-0.2	0.2	-0.5	60	80	20	20	150
P22	14x30	893.25	-87.50	4.4	3.6	0	0	0	0	0.7	-0.7	0.1	0.0	60	75	20	20	150
P23	14x30	1220.00	-79.50	5.5	3.5	0	0	0	0	0.4	-0.1	0.2	-0.5	60	75	20	20	150
P24	14x30	15.50	-197.50	8.2	-12.1	0	0	0	0	0.7	-0.6	0.2	-0.3	0	0	0	0	0
P25	20x30	645.50	-197.50	15.3	-47.7	0	0	0	0	0.7	-0.7	0.1	0.0	0	0	0	0	0
P26	14x30	622.50	-189.50	1.5	-1.6	0	0	0	0	0.4	-0.2	0.7	-0.5	0	0	0	0	0

Localização no eixo X		Localização no eixo Y	
Coordenadas (cm)	Nome	Coordenadas (cm)	Nome
7.50	P3, P7, P11, P20	1507.55	P2
15.50	P15, P24	1799.55	P1
64.50	P25	1374.55	P5
222.50	P16	1366.55	P3, P4, P6
420.00	P12	1007.55	P7
427.00	P4, P8	1001.55	P8, P9
622.50	P17, P21, P26	999.55	P10
645.50	P5	622.50	P12, P13, P14
645.50	P1	614.50	P11
757.50	P9	467.40	P16
785.50	P13	459.50	P15
785.50	P18	256.50	P17, P18, P19
893.25	P22	15.50	P20
1212.00	P2, P10, P14	-79.50	P21, P23
1220.00	P6, P19, P23	-87.50	P22
		-189.50	P28
		-194.50	P25
		-197.50	P24

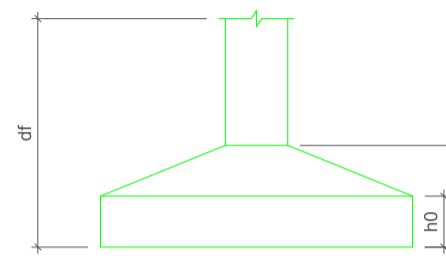
Os esforços indicados nesta tabela são os valores máximos obtidos pela envoltória de todas as combinações definidas para as fundações. Para análises complementares, deve-se consultar o relatório de esforços na fundação, que apresenta os valores calculados para cada combinação.

Nome	Tipo	Altura (cm)	Dados			Sobrecarga (kgf/m²)		
			Elevação (cm)	Nível (cm)	Peso próprio (kgf/m²)	Adicional	Acidental	Localizada
LC1	Maciça	10	0	310	250	182	50	-
LC2	Maciça	10	0	310	250	182	50	-
LC3	Pré-moldada	12	0	310	135	182	50	-
LC4	Pré-moldada	12	0	310	135	182	50	-

Características dos materiais	
fck (kgf/cm²)	Ecs (kgf/cm²)
250	241500

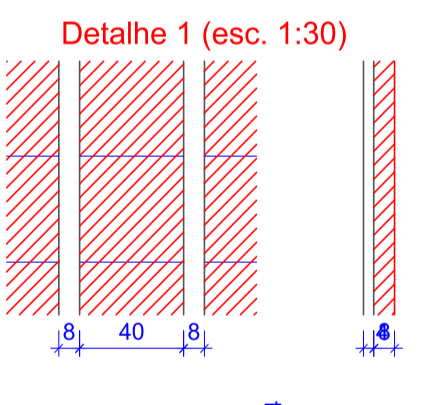
Dimensão máxima do agregado = 19 mm

Legenda dos pilares		Legenda das vigas e paredes	
	Pilar que morre		Viga
	Pilar que passa		

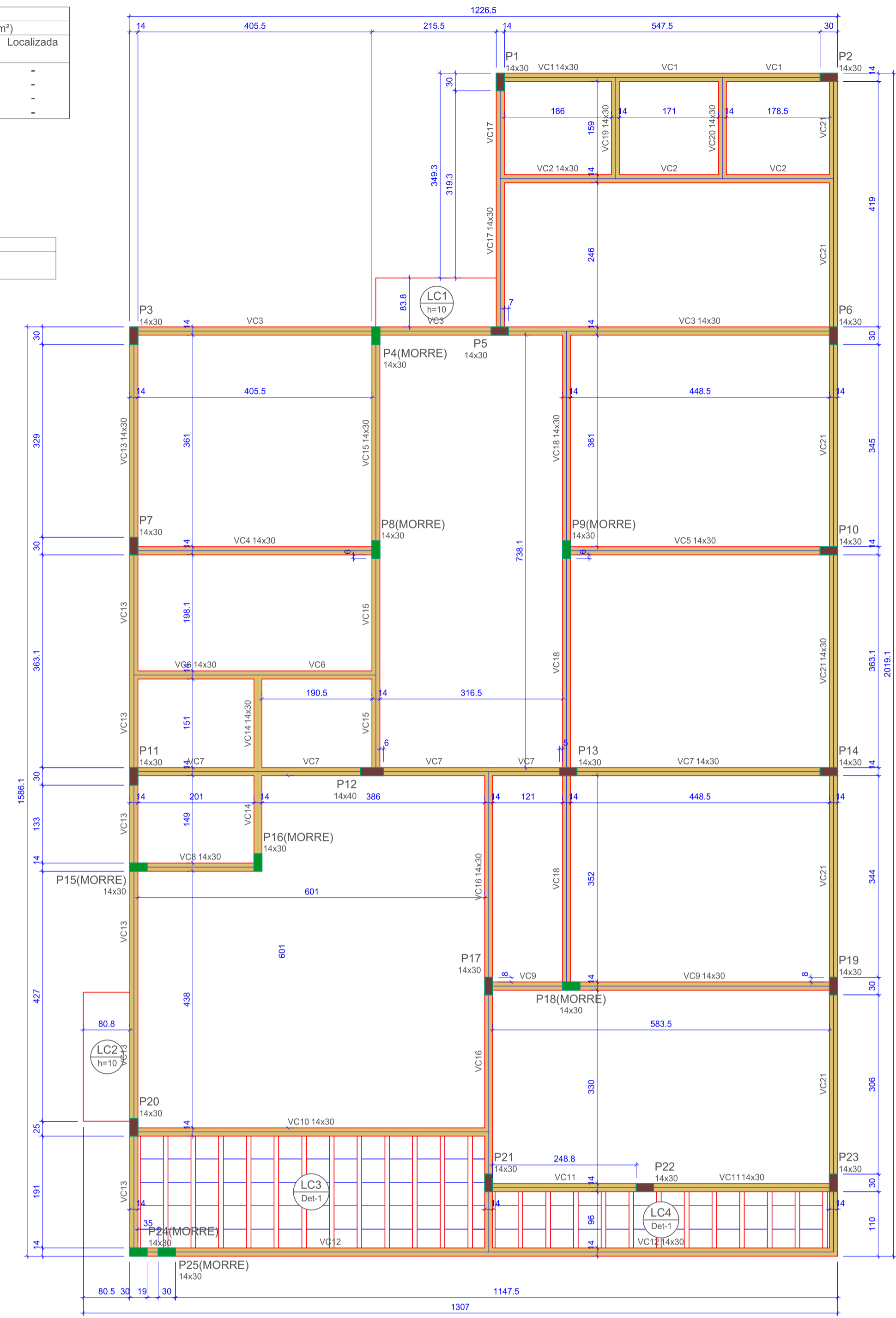


Vigas			
Nome	Seção (cm)	Elevação (cm)	Nível (cm)
VC1	14x30	0	310
VC2	14x30	0	310
VC3	14x30	0	310
VC4	14x30	0	310
VC5	14x30	0	310
VC6	14x30	0	310
VC7	14x30	0	310
VC8	14x30	0	310
VC9	14x30	0	310
VC10	14x30	0	310
VC11	14x30	0	310
VC12	14x30	0	310
VC13	14x30	0	310
VC14	14x30	0	310
VC15	14x30	0	310
VC16	14x30	0	310
VC17	14x30	0	310
VC18	14x30	0	310
VC19	14x30	0	310
VC20	14x30	0	310
VC21	14x30	0	310

Pilares			
Nome	Seção (cm)	Elevação (cm)	Nível (cm)
P1	14x30	0	310
P2	14x30	0	310
P3	14x30	0	310
P4	14x30	0	310
P5	14x30	0	310
P6	14x30	0	310
P7	14x30	0	310
P8	14x30	0	310
P9	14x30	0	310
P10	14x30	0	310
P11	14x30	0	310
P12	14x30	0	310
P13	14x30	0	310
P14	14x30	0	310
P15	14x30	0	310
P16	14x30	0	310
P17	14x30	0	310
P18	14x30	0	310
P19	14x30	0	310
P20	14x30	0	310
P21	14x30	0	310
P22	14x30	0	310
P23	14x30	0	310
P24	14x30	0	310
P25	14x30	0	310



Detalhe	Tipo	Nome		Quantidade
		Dimensões (cm)		
		hb	bx by	
1	EPS Unidirecional	B8/40/40	8 40 40	101

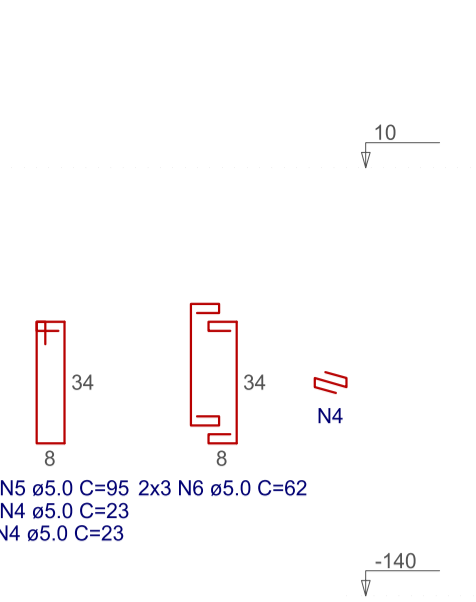
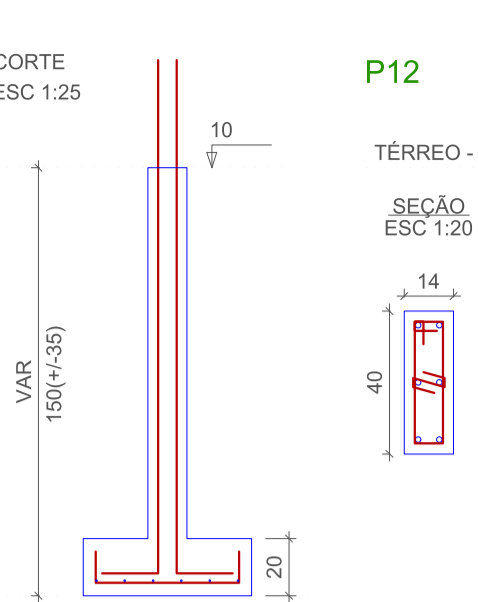
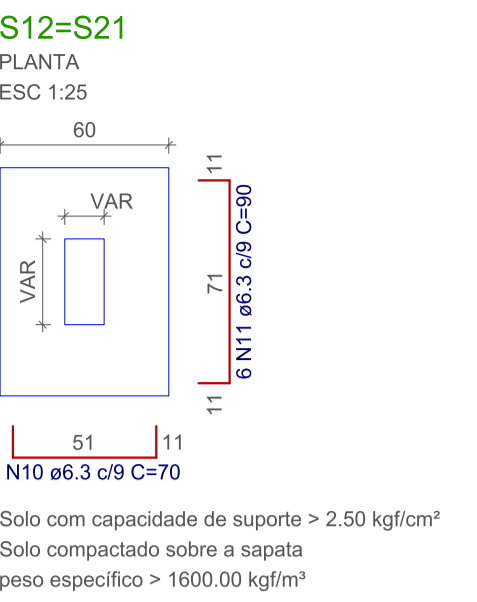
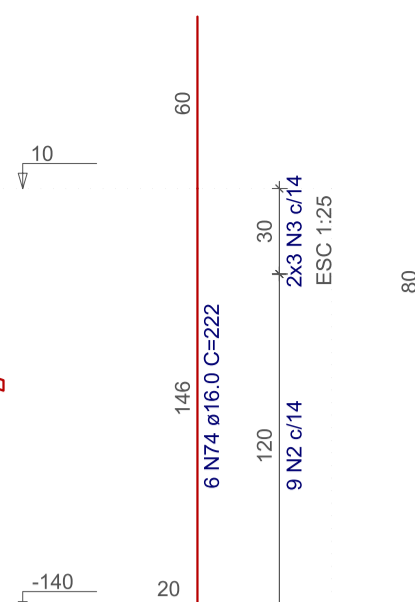
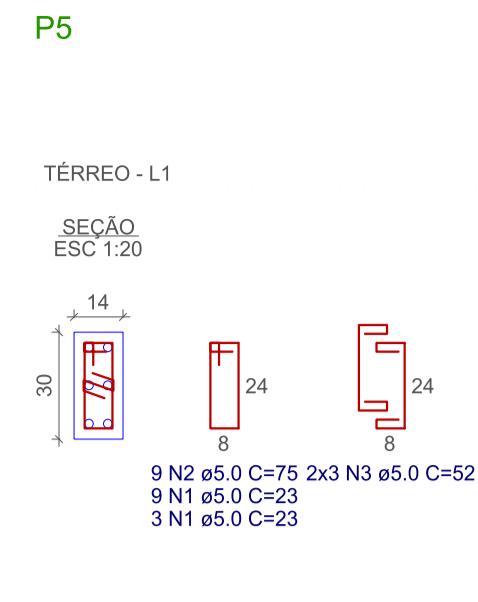
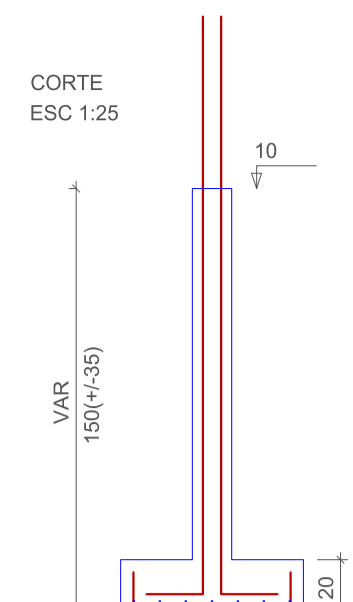
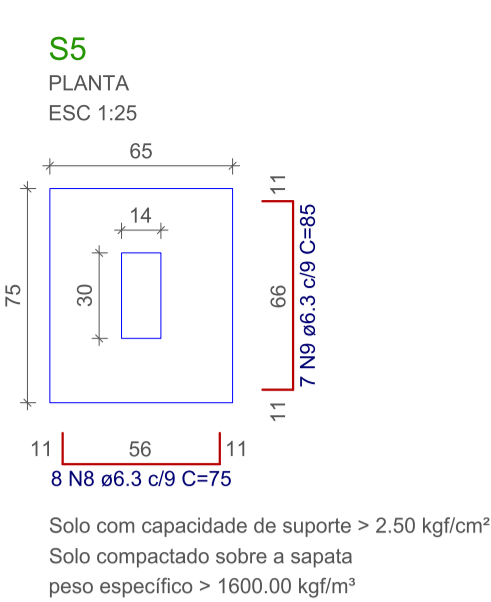


Forma do pavimento Cobertura (Nível 310)
escala 1:50



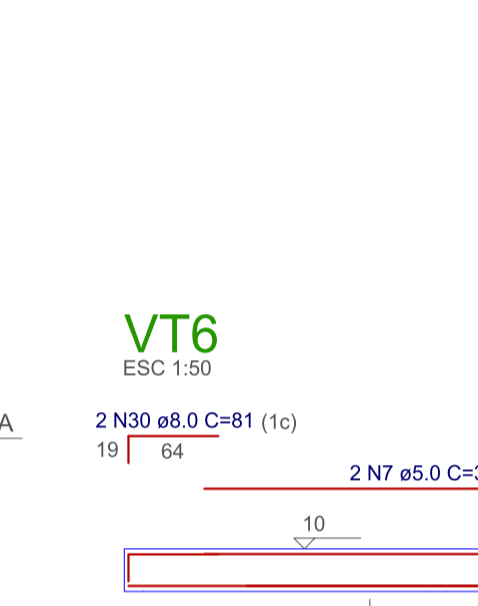
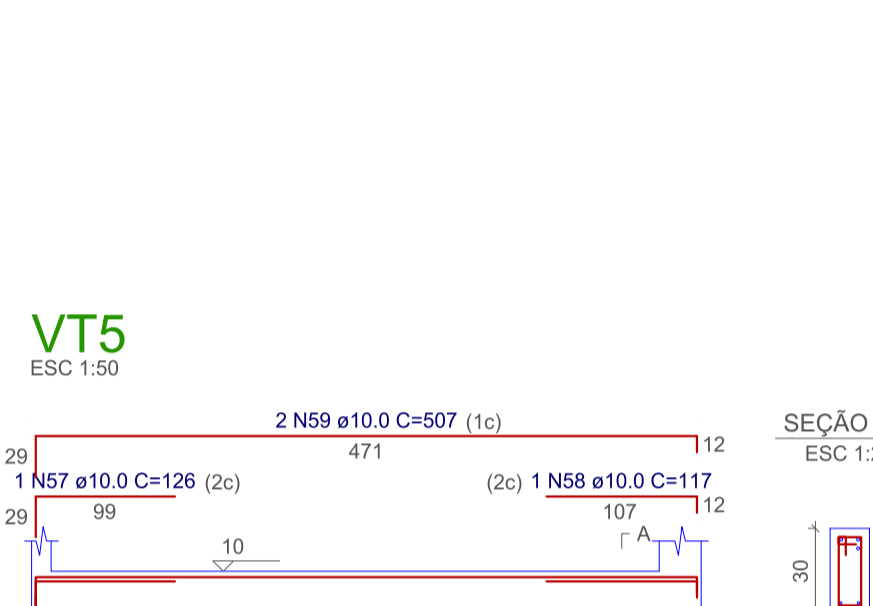
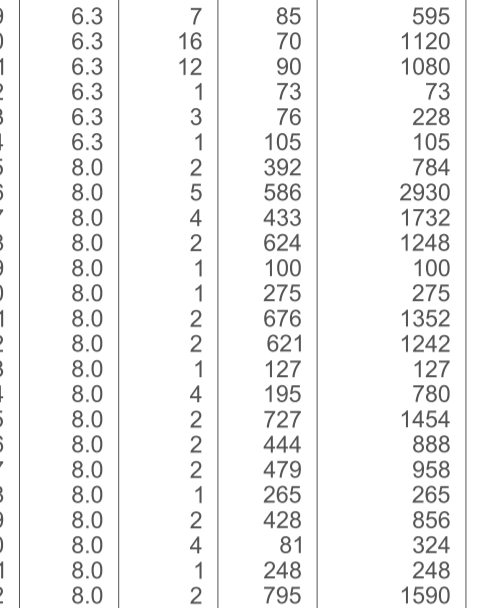
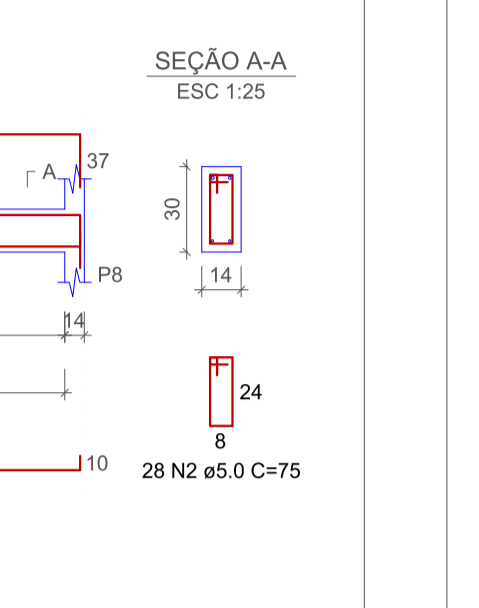
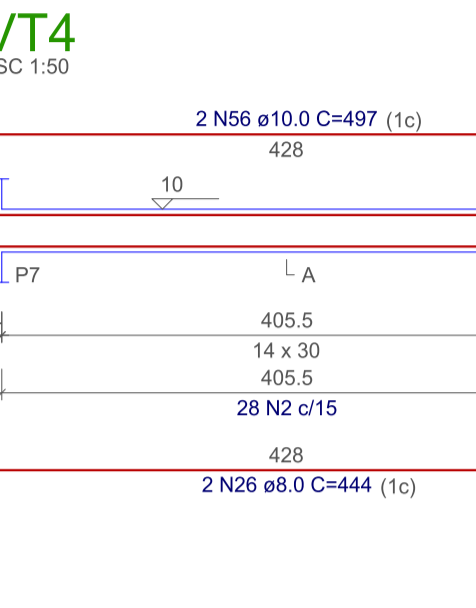
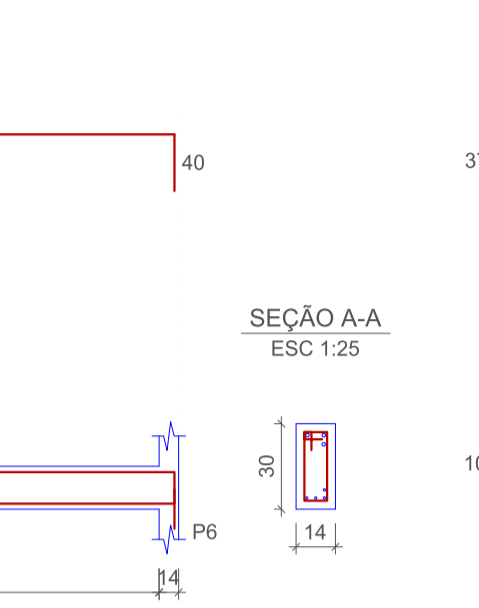
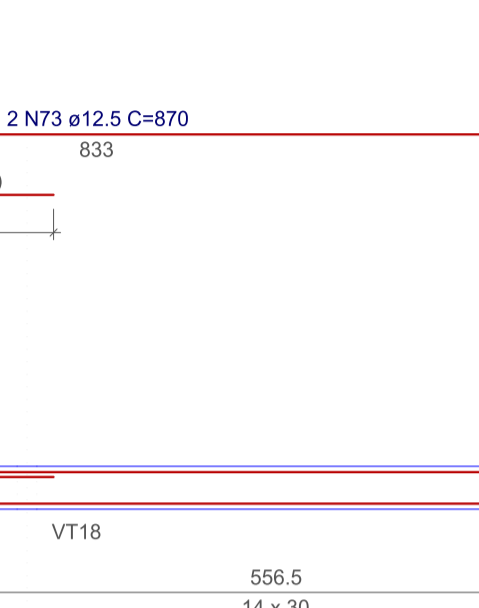
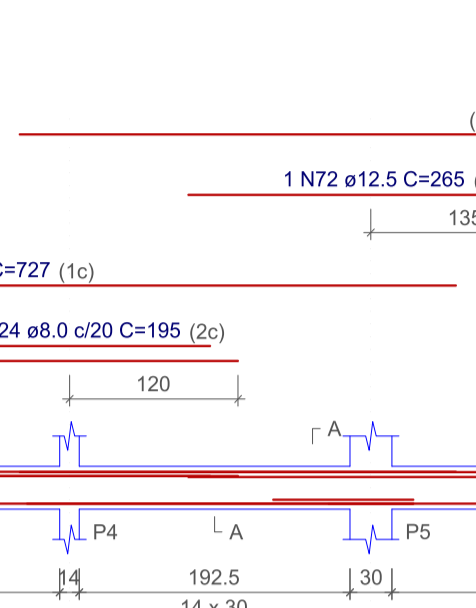
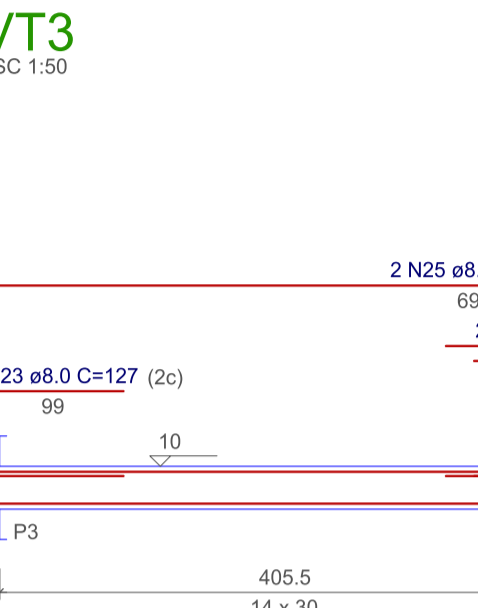
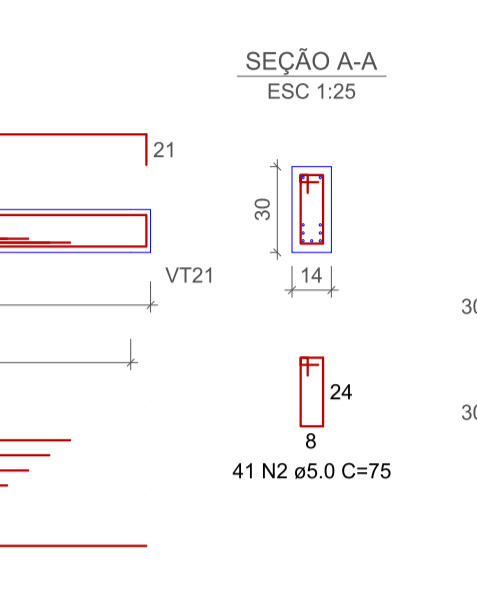
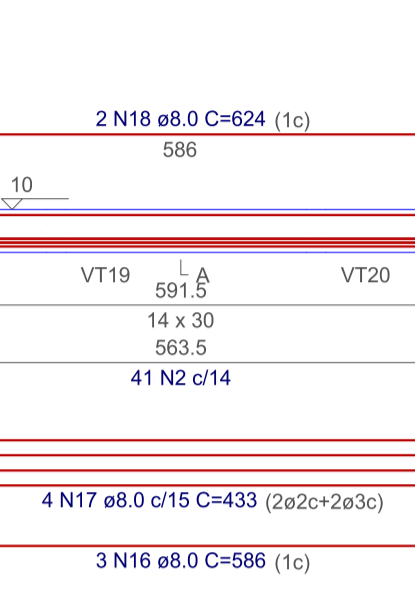
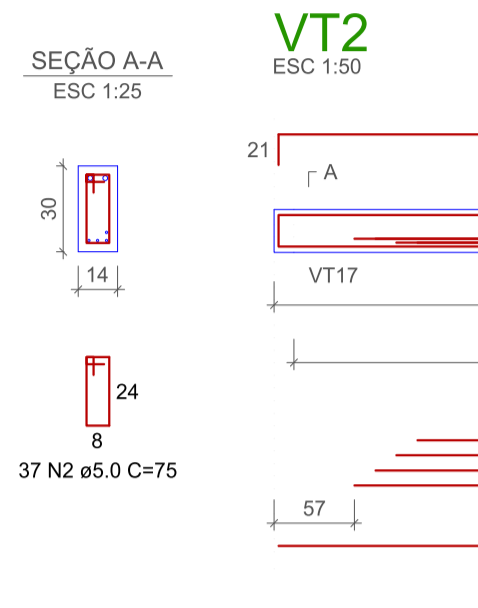
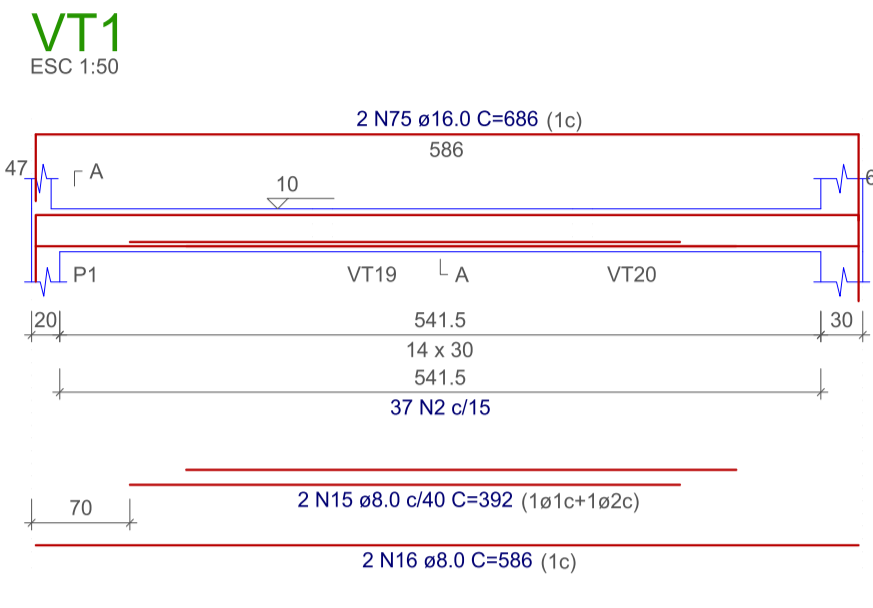
Projeto Estrutural
Projeto UBS Floresta do Araguaia - PA

PREFEITURA DE FLORESTA DO ARAGUAIA - PA	
Autor do projeto:	
Lucas Oliveira Dantas Engenheiro Civil: CREA-PA 886058/D-PA	Áreas:
Conteúdo desta prancha:	
Localização e Formas	
Data: Setembro de 2023	Escala: Indicadas
Prancha: 02/07	



RELAÇÃO DO AÇO

AÇO	N	DIAM (mm)	QUANT	C.UNIT (cm)	C.TOTAL (cm)
CA60	1	5.0	12	23	276
	2	5.0	621	75	46575
	3	5.0	12	52	624
	4	5.0	13	23	299
	5	5.0	10	95	950
	6	5.0	6	62	372
	7	5.0	2	320	640
CA50	8	6.3	8	75	600
	9	6.3	7	85	595
	10	6.3	16	70	1120
	11	6.3	12	90	1080
	12	6.3	1	73	73
	13	6.3	3	76	228
	14	6.3	1	105	105
	15	8.0	2	392	784
	16	8.0	5	586	2930
	17	8.0	4	433	1732
	18	8.0	2	624	1248
	19	8.0	1	100	100
	20	8.0	1	275	275
	21	8.0	2	676	1352
	22	8.0	2	621	1242
	23	8.0	1	127	127
	24	8.0	4	195	780
	25	8.0	2	727	1454
	26	8.0	2	444	888
	27	8.0	2	479	958
	28	8.0	1	265	265
	29	8.0	2	428	856
	30	8.0	4	81	324
	31	8.0	1	248	248
	32	8.0	2	795	1590
	33	8.0	2	494	988
	34	8.0	3	239	717
	35	8.0	1	185	185
	36	8.0	4	622	2488
	37	8.0	2	350	700
	38	8.0	2	631	1262
	39	8.0	2	456	912
	40	8.0	1	474	474
	41	8.0	2	653	1306
	42	8.0	2	608	1216
	43	8.0	2	129	258
	44	8.0	2	648	1296
	45	8.0	2	854	1708
	46	8.0	2	794	1588
	47	8.0	1	160	160
	48	8.0	1	528	528
	49	8.0	2	1198	2396
	50	8.0	2	468	936
	51	8.0	2	344	688
	52	8.0	1	102	102
	53	8.0	2	358	716
	54	10.0	10	202	2020
	55	10.0	2	75	150
	56	10.0	2	497	994
	57	10.0	1	126	126
	58	10.0	1	117	117
	59	10.0	2	507	1014
	60	10.0	1	270	270
	61	10.0	1	601	601
	62	10.0	1	127	127
	63	10.0	2	1134	2268
	64	10.0	2	202	404
	65	10.0	2	259	518
	66	10.0	1	225	225
	67	10.0	2	654	1308
	68	10.0	1	155	155
	69	10.0	2	230	460
	70	10.0	1	106	106
	71	10.0	2	109	218
	72	12.5	1	265	265
	73	12.5	2	870	1740
	74	16.0	6	222	1332
	75	16.0	2	686	1372



RESUMO DO AÇO

AÇO	DIAM (mm)	C.TOTAL (m)	PESO + 10% (kg)
CA50	6.3	38	10.2
	8.0	377.8	164
	10.0	110.8	75.2
	12.5	20.1	21.2
	16.0	27	46.9
	5.0	497.4	84.3
PESO TOTAL (kg)			
CA50		317.5	
CA60		84.3	

Volume de concreto (C-25) = 4.54 m³
Área de forma = 77.11 m²



Projeto Estrutural
Projeto UBS Floresta do Araguaia - PA

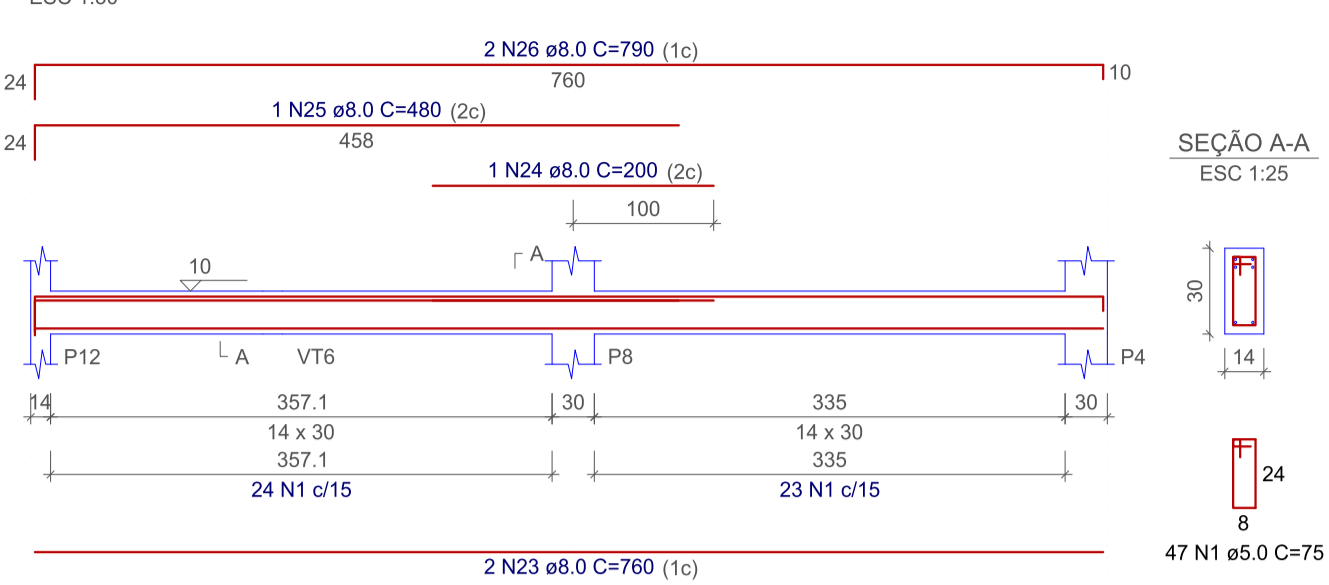
PREFEITURA DE FLORESTA DO ARAGUAIA - PA

Autor do projeto: Lucas Oliveira Dantas
Engenheiro Civil:
CREA-PA 886058/D-PA

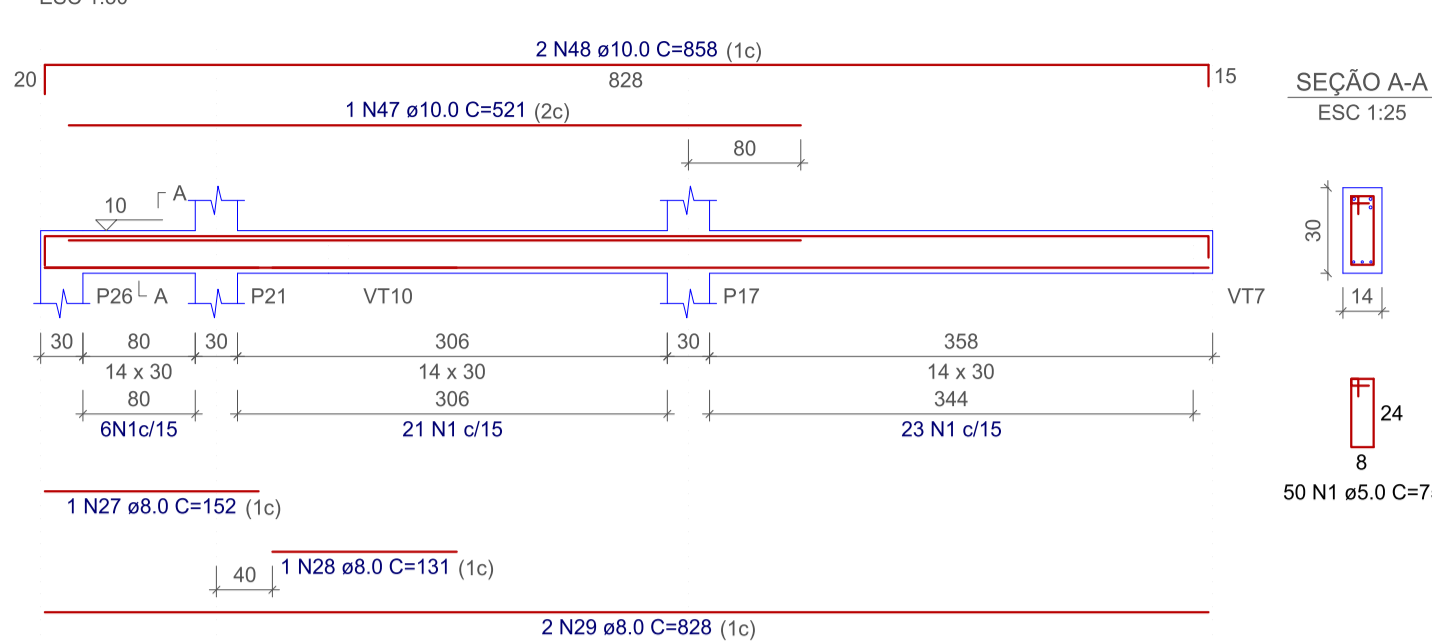
Conteúdo desta prancha: Áreas:
Fundação: Pilares e Vigas

Data: Setembro de 2023
Escala: Indicadas
Prancha: 03/07

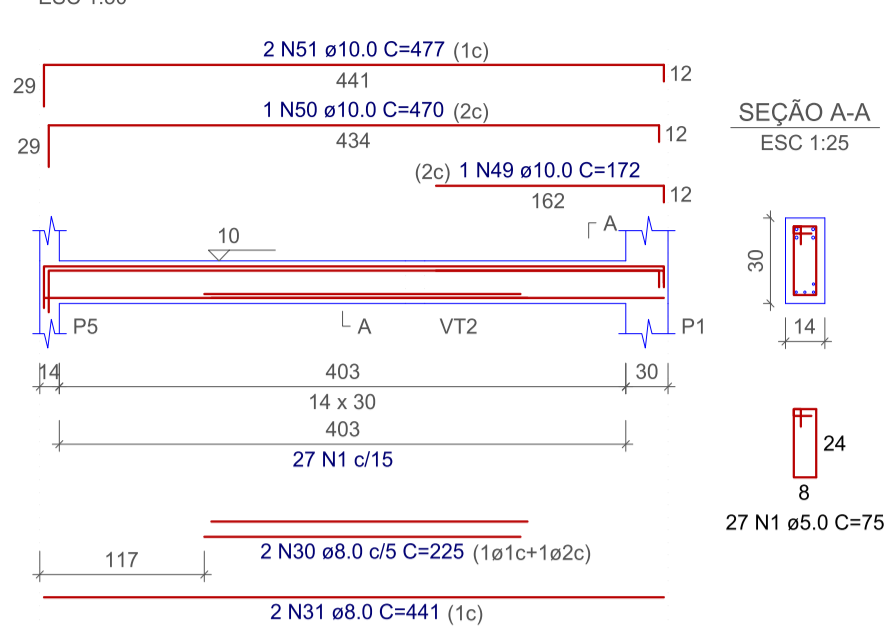
VT15



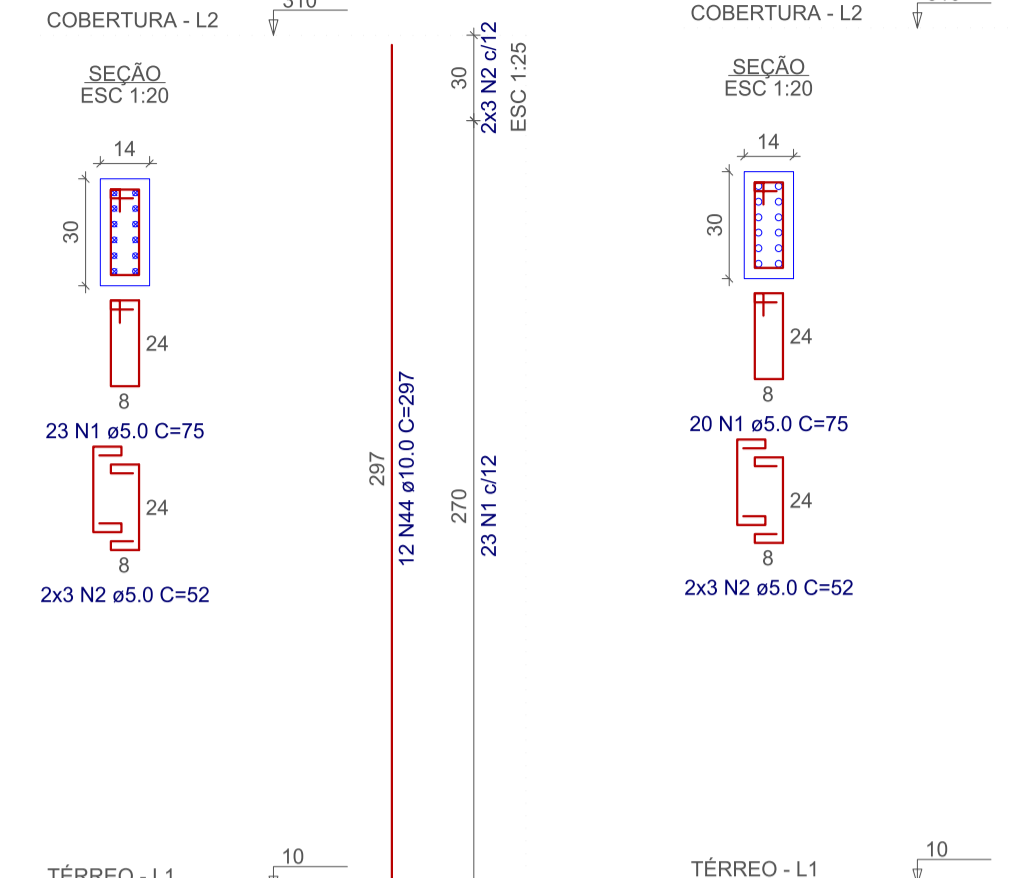
VT16



VT17



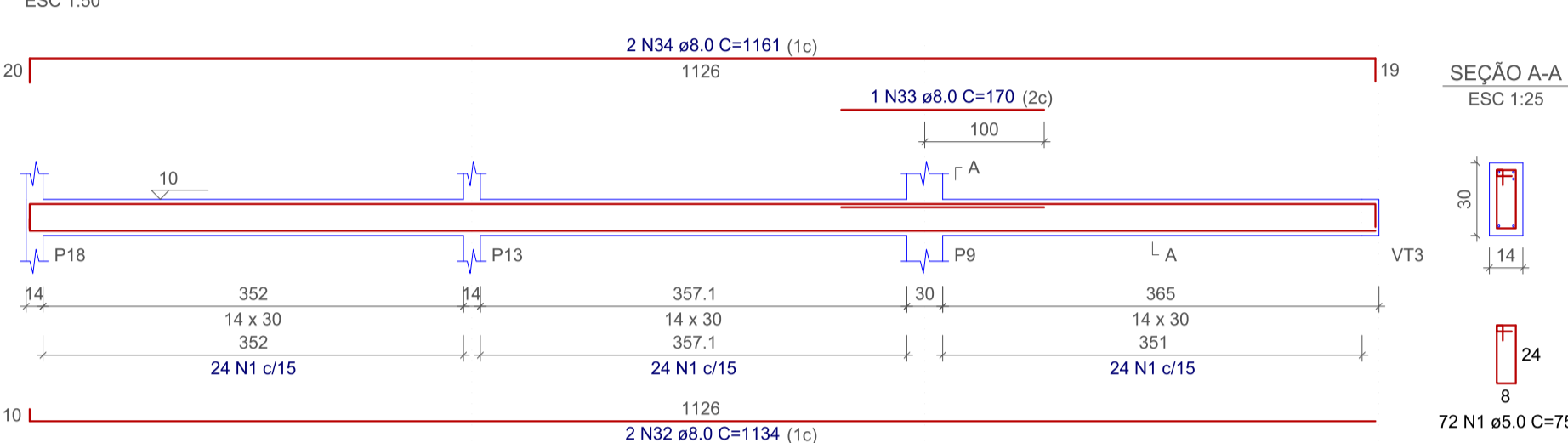
P4



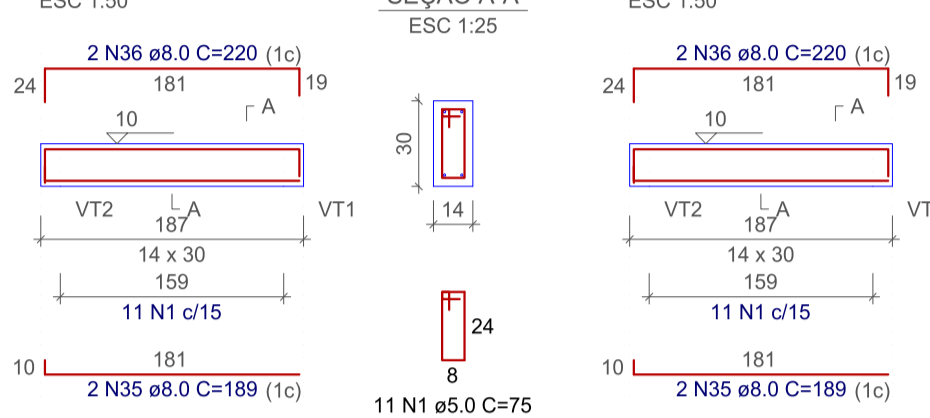
RELAÇÃO DO AÇO

AÇO	N	DIAM (mm)	QUANT	C.UNIT (cm)	C.TOTAL (cm)
CA60	1	5.0	1031	75	77325
	2	5.0	144	52	7488
	3	5.0	89	23	1587
	4	5.0	260	23	5980
	5	5.0	23	95	2165
	6	5.0	6	62	372
	7	5.0	2	478	956
	8	8.0	2	594	1188
	9	8.0	2	165	330
	10	8.0	1	157	157
	11	8.0	2	160	320
	12	8.0	2	620	1240
	13	8.0	2	586	1172
	14	8.0	4	81	324
	15	8.0	2	469	938
	16	8.0	2	628	1256
	17	8.0	1	109	109
	18	8.0	1	215	215
	19	8.0	1	385	385
	20	8.0	1	124	124
	21	8.0	2	1121	2242
	22	8.0	2	198	396
	23	8.0	2	760	1520
	24	8.0	1	200	200
	25	8.0	1	480	480
	26	8.0	2	790	1580
	27	8.0	1	152	152
	28	8.0	1	131	131
	29	8.0	2	828	1656
	30	8.0	2	225	450
	31	8.0	2	441	882
	32	8.0	2	1134	2268
	33	8.0	1	170	170
	34	8.0	2	1161	2322
	35	8.0	4	189	756
	36	8.0	4	220	880
	37	8.0	2	1121	2242
	38	8.0	3	246	738
	39	8.0	2	850	1700
	40	8.0	1	423	423
	41	8.0	2	1158	2316
	42	8.0	2	178	356
	43	10.0	56	338	18928
	44	10.0	60	297	17820
	45	10.0	2	75	150
	46	10.0	2	290	580
	47	10.0	1	521	521
	48	10.0	2	858	1716
	49	10.0	1	172	172
	50	10.0	1	470	470
	51	10.0	2	477	954
	52	10.0	1	210	210
	53	10.0	1	568	568
	54	10.0	2	688	1336
	55	12.5	12	297	3564
	56	12.5	30	347	10410

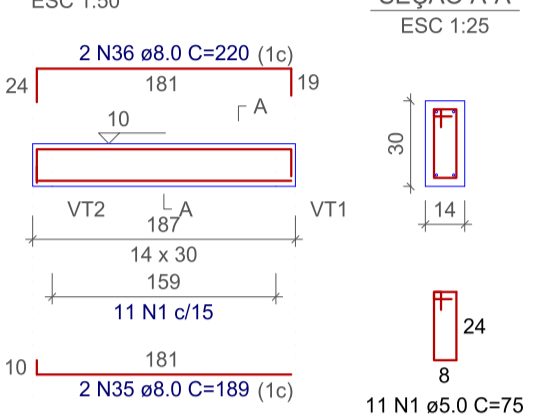
VT18



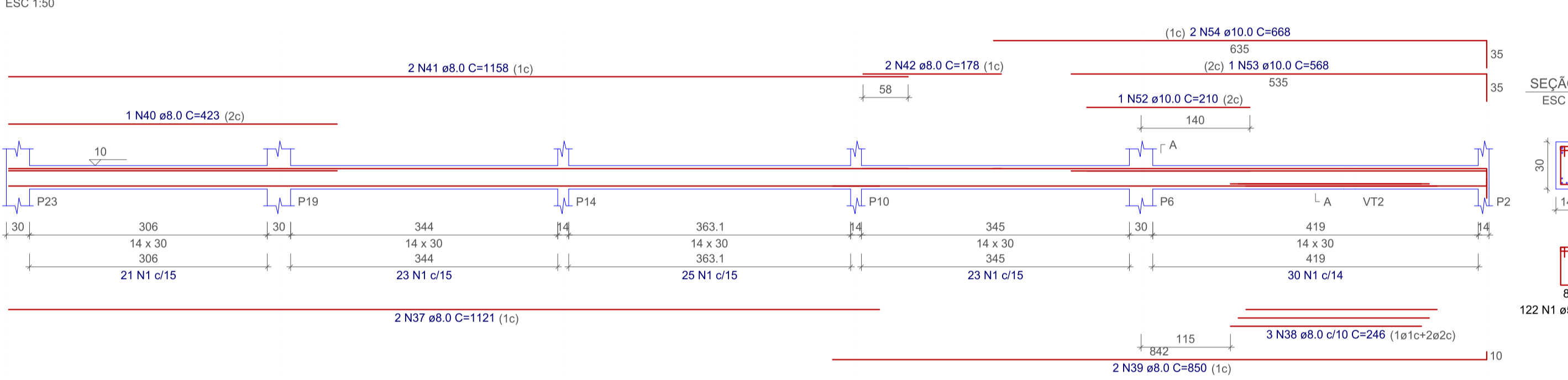
VT19



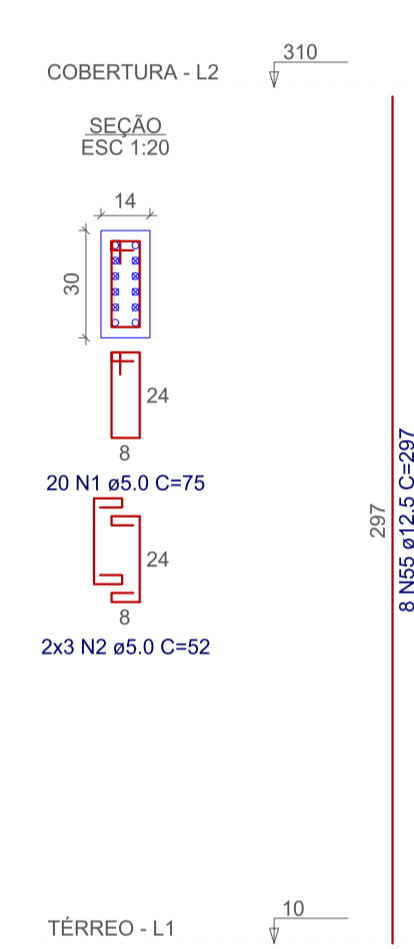
VT20



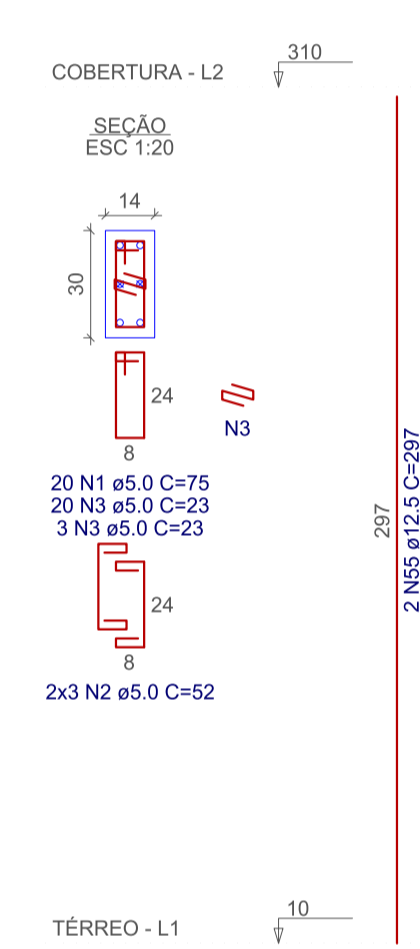
VT21



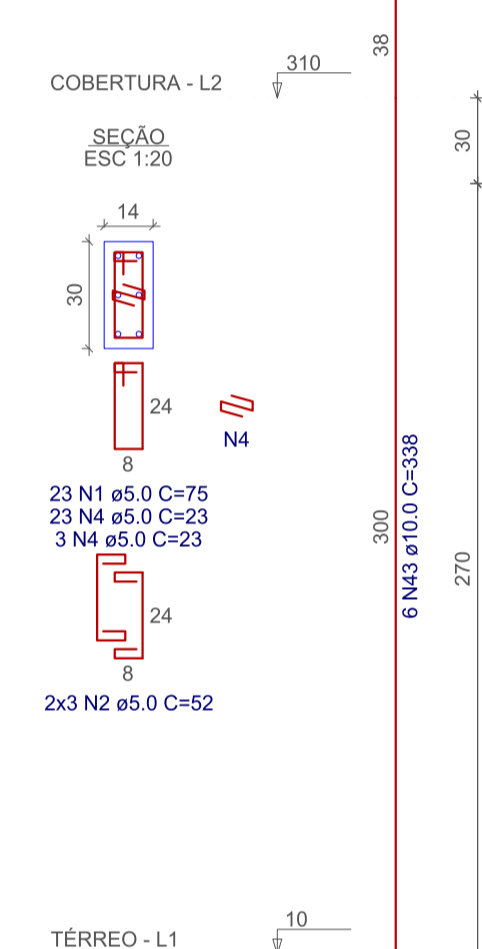
P1



P2=P5



P3=P21=P23

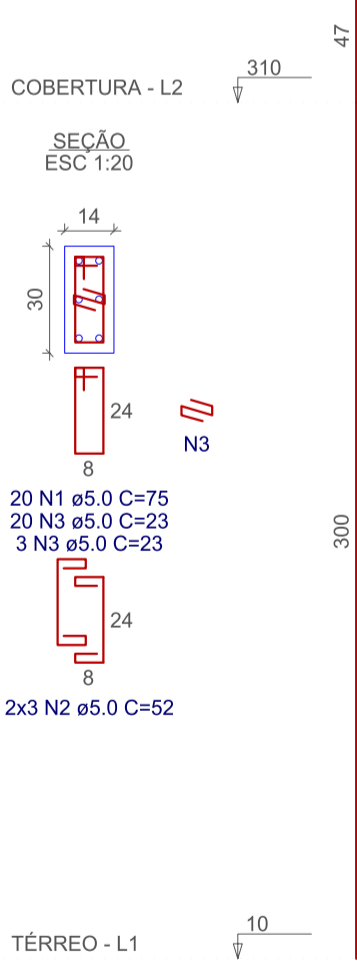


RESUMO DO AÇO

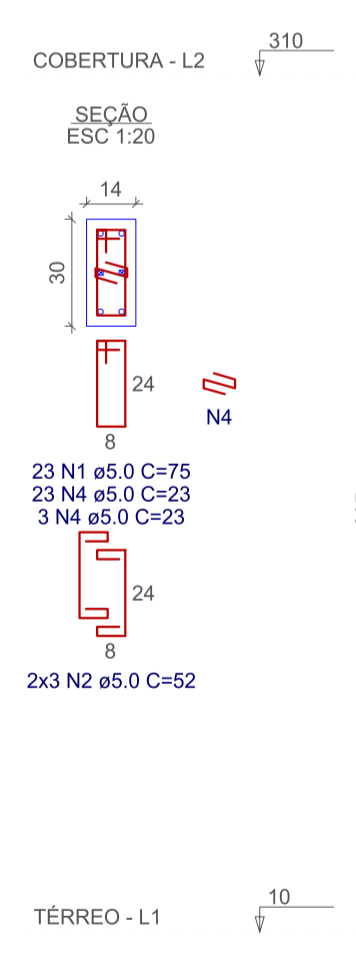
AÇO	DIAM (mm)	C.TOTAL (m)	PESO + 10% (kg)
CA50	8.0	316.2	137.2
	10.0	434.3	294.5
	12.5	139.7	148.1
CA60	5.0	958.9	162.6

Volume de concreto (C-25) = 6.50 m³
Área de forma = 124.85 m²

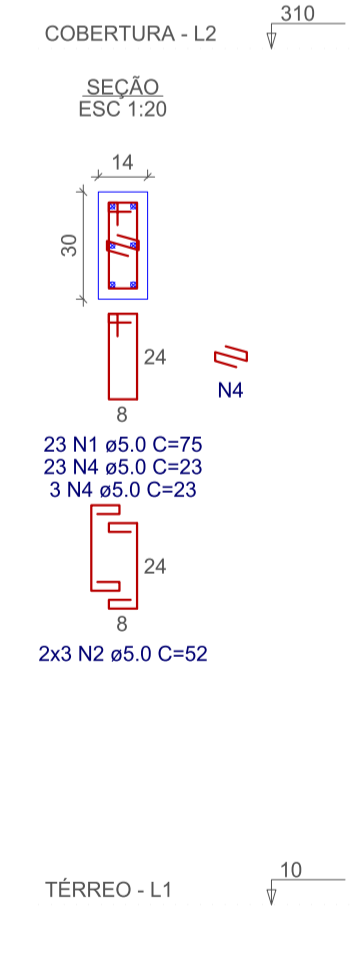
P6



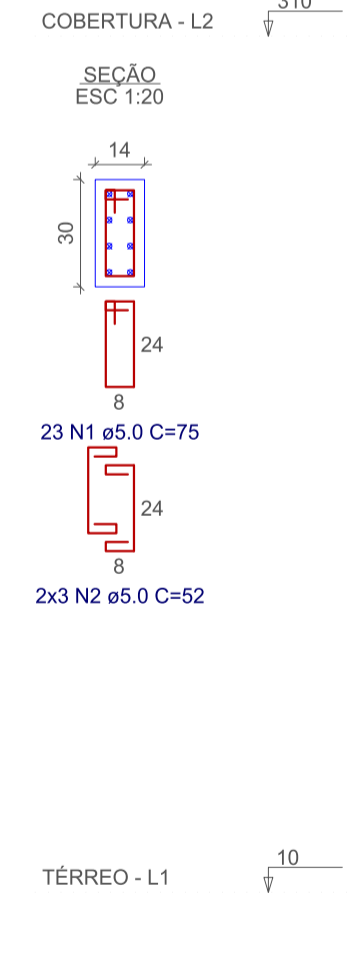
P7=P11



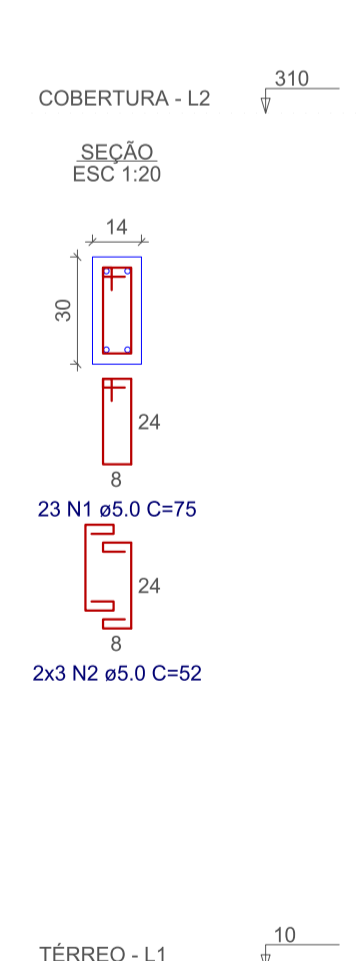
P8=P16=P18=P25



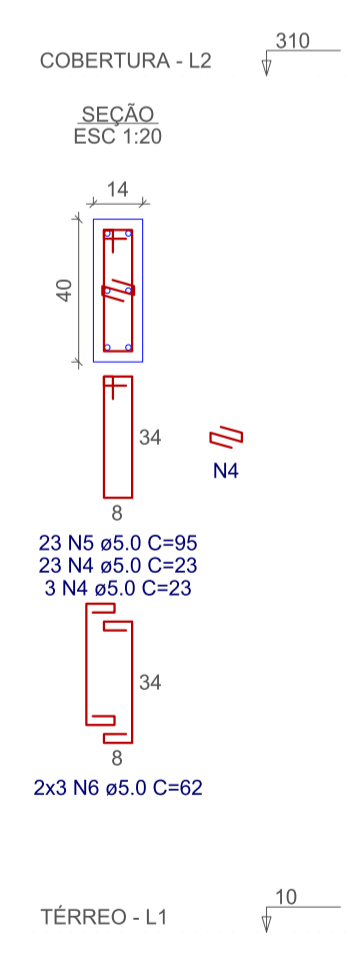
P9=P24



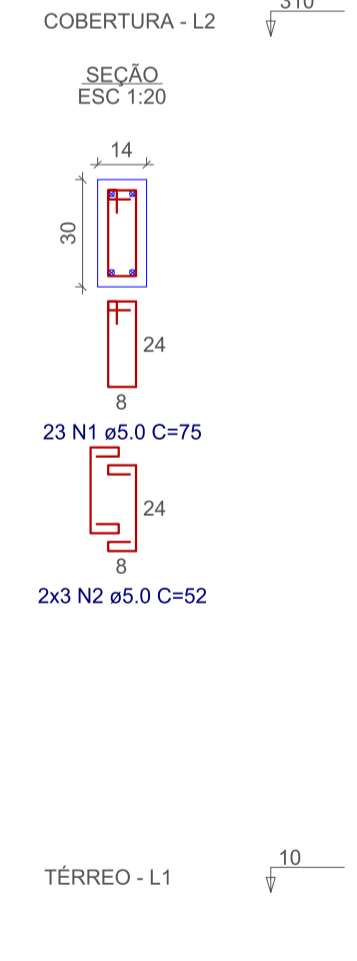
P10=P13=P14=P19=P22



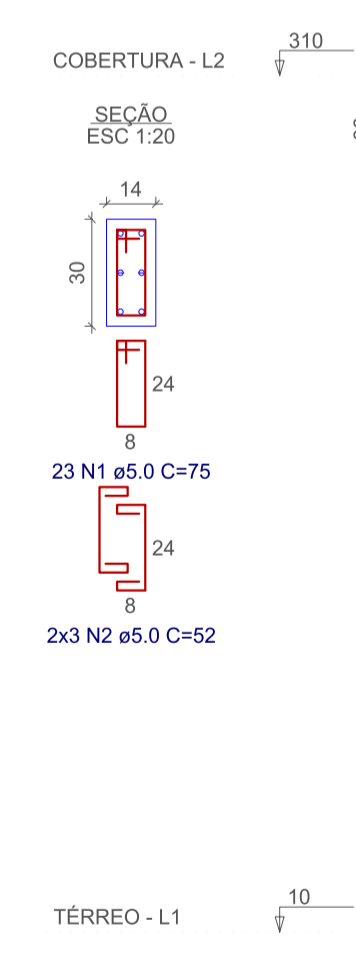
P12



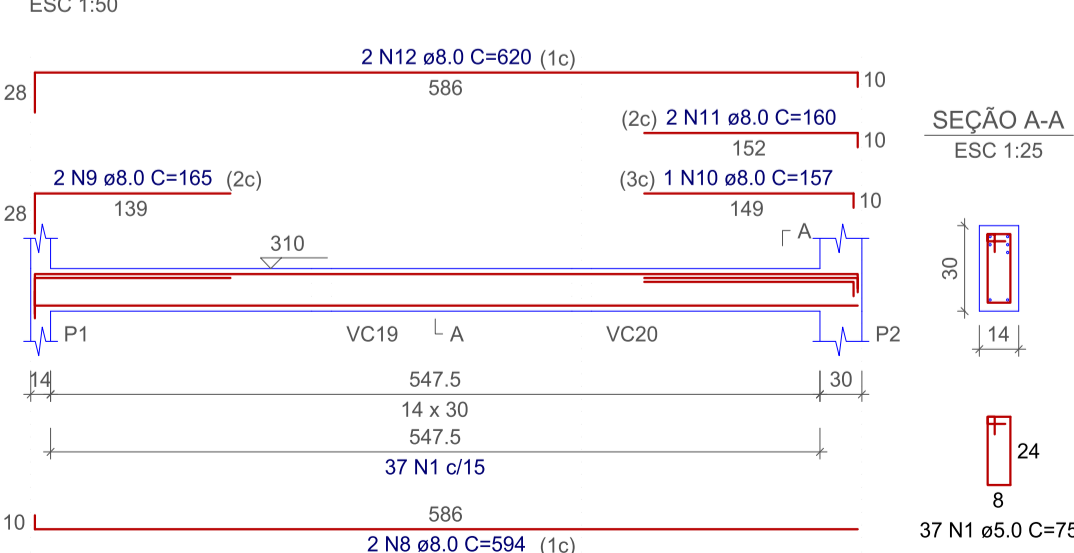
P15



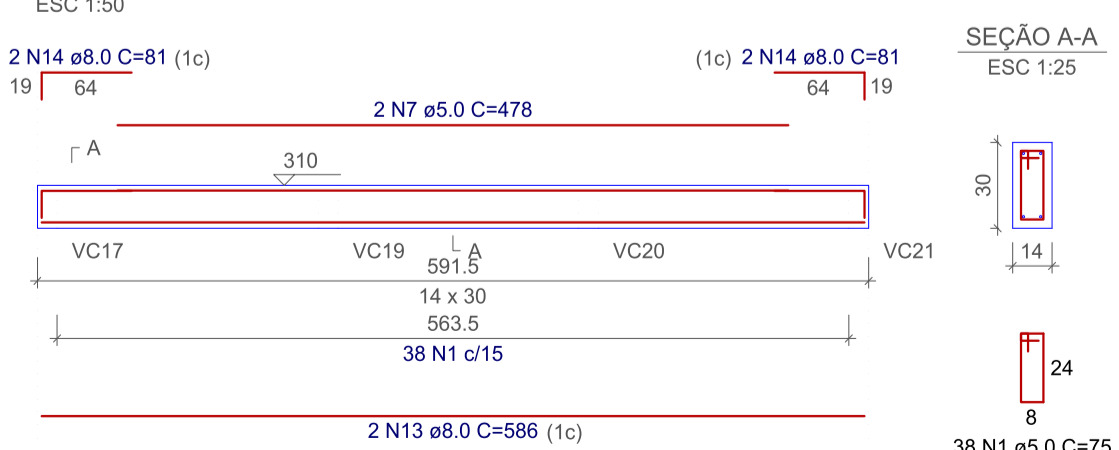
P17



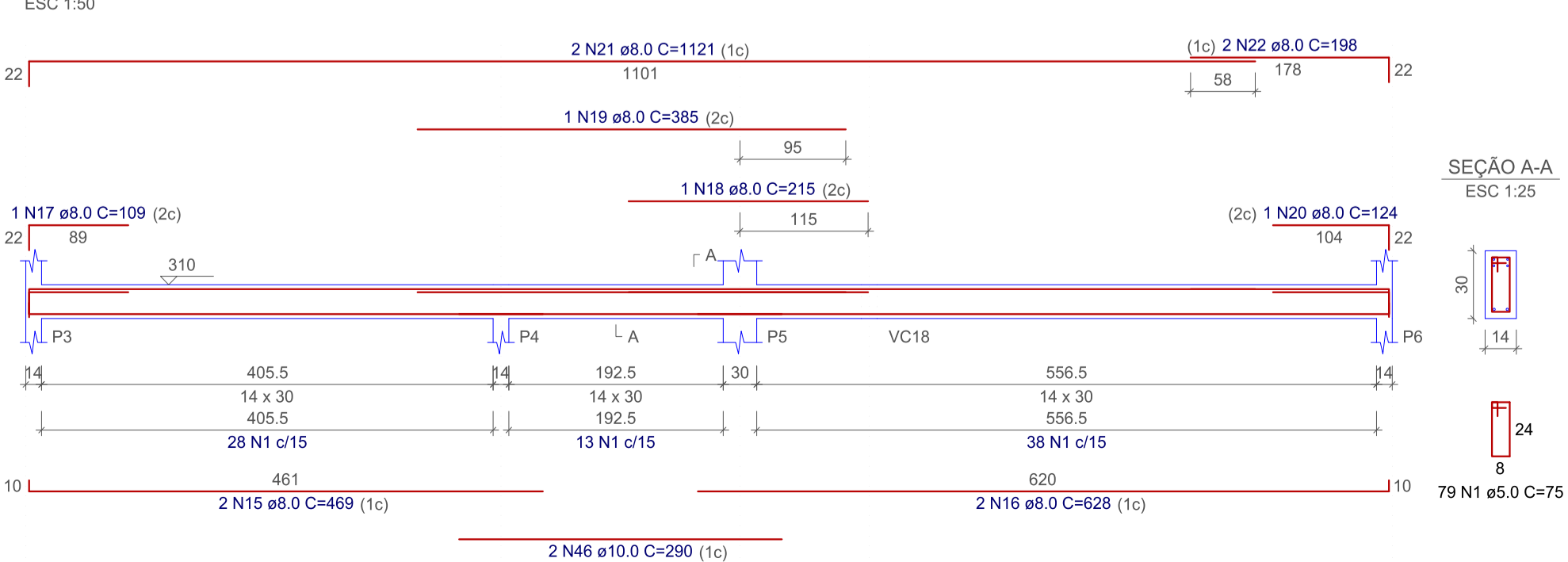
VC1



VC2



VC3



Projeto Estrutural

Projeto UBS Floresta do Araguaia - PA

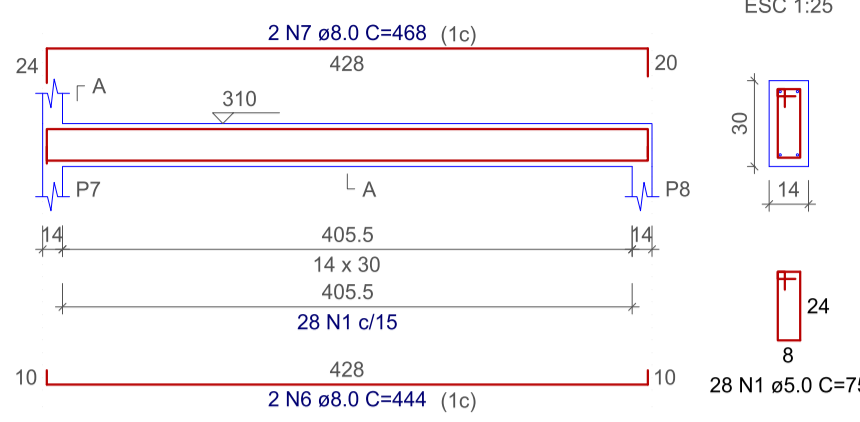
PREFEITURA DE FLORESTA DO ARAGUAIA - PA

Autor do projeto: Lucas Oliveira Dantas
Engenheiro Civil:
CREA-PA 886058/D-PA

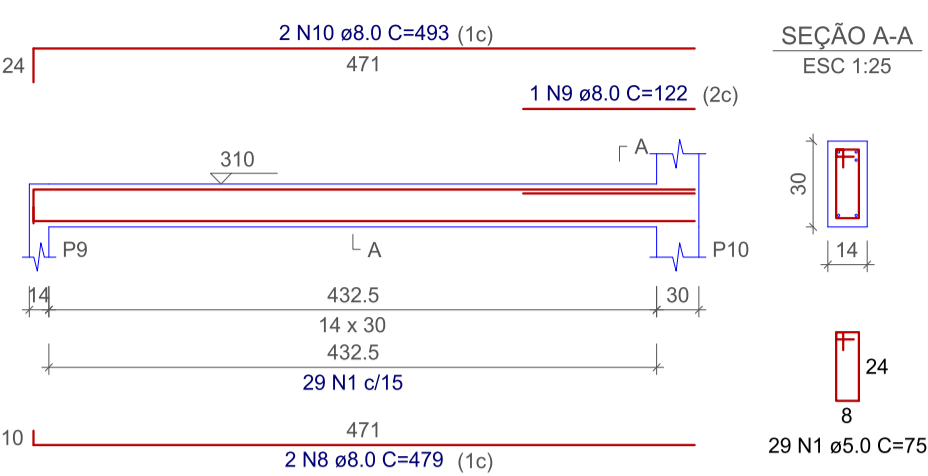
Conteúdo desta prancha: Pilares e Vigas

Data: Setembro de 2023
Escala: Indicadas
Prancha: 04/07

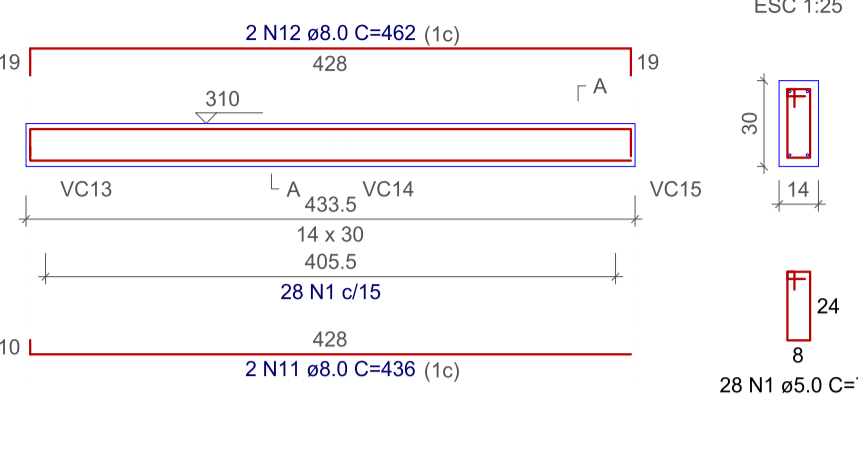
VC4
ESC 1:50



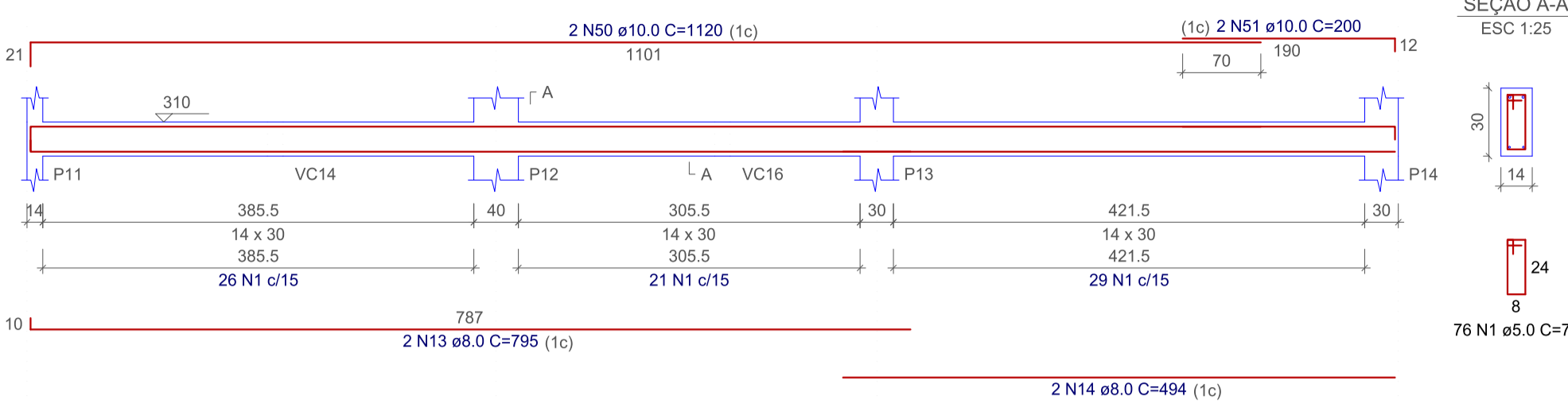
VC5
ESC 1:50



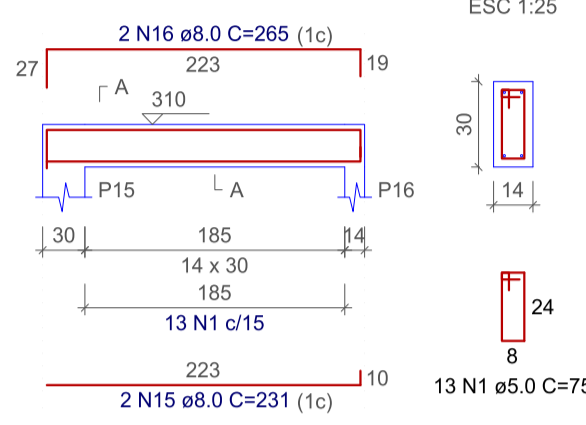
VC6
ESC 1:50



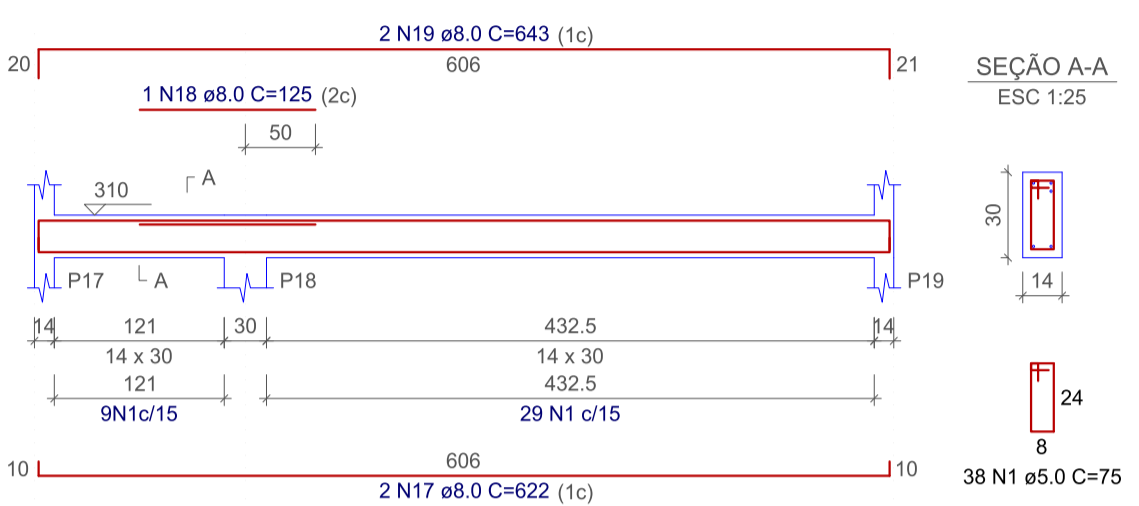
VC7
ESC 1:50



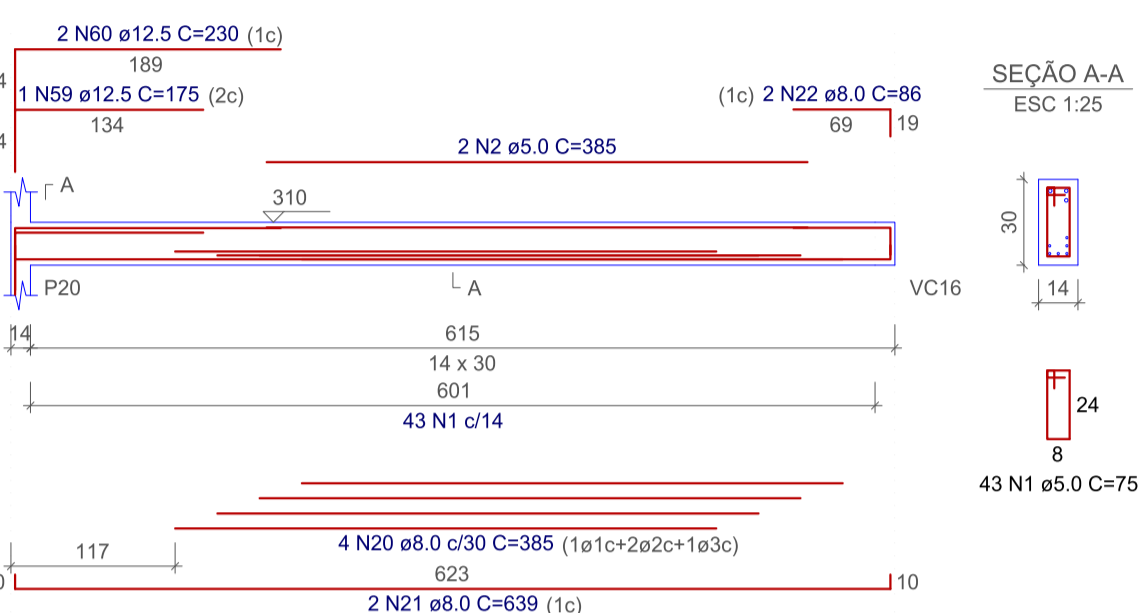
VC8
ESC 1:50



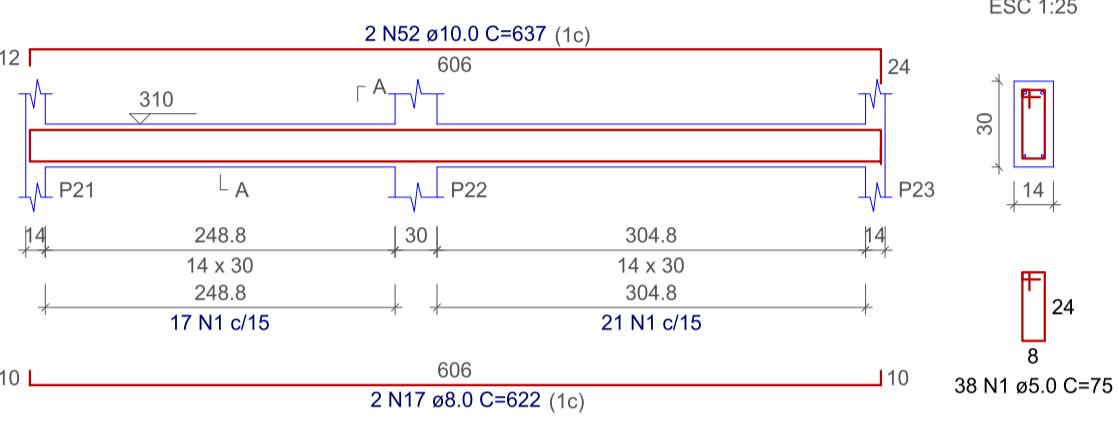
VC9
ESC 1:50



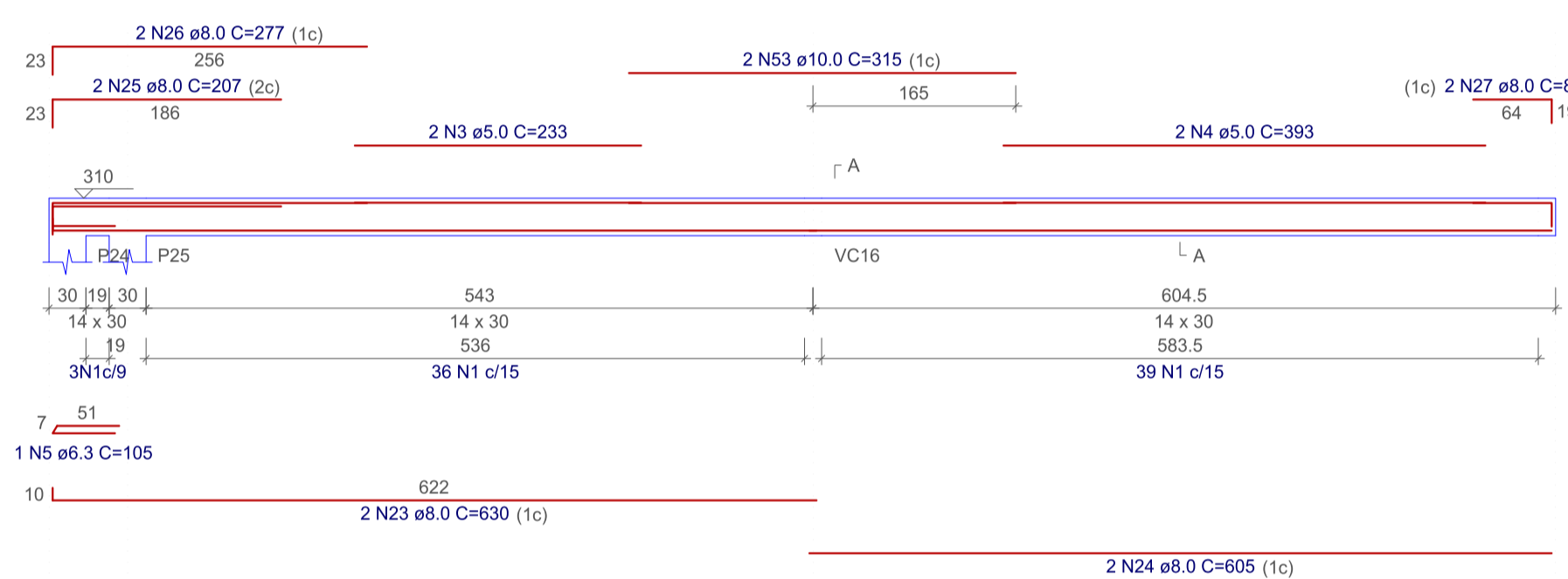
VC10
ESC 1:50



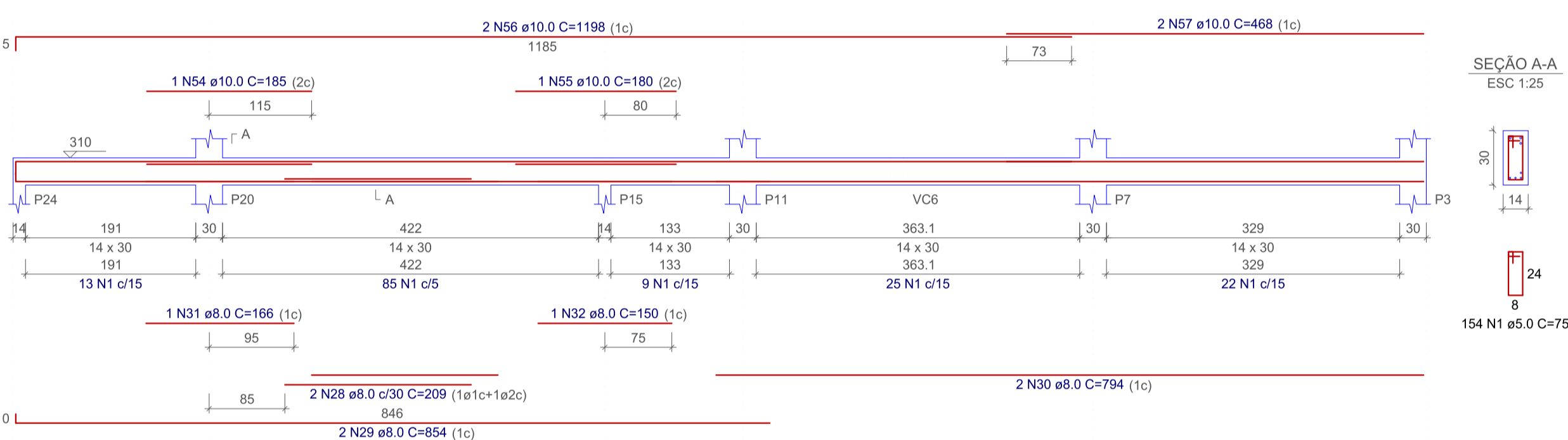
VC11
ESC 1:50



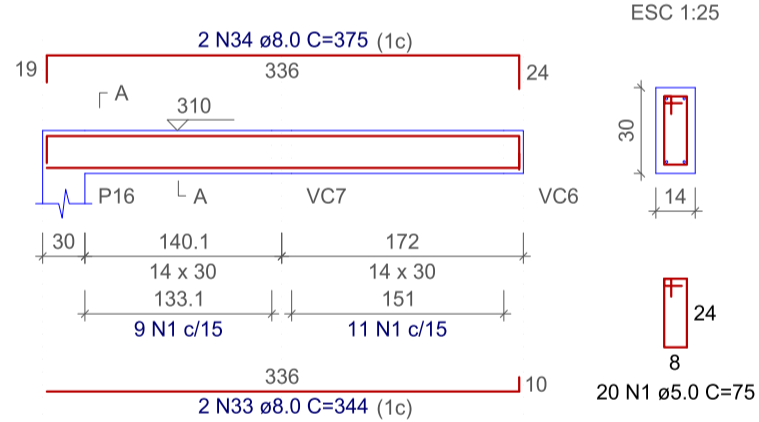
VC12
ESC 1:50



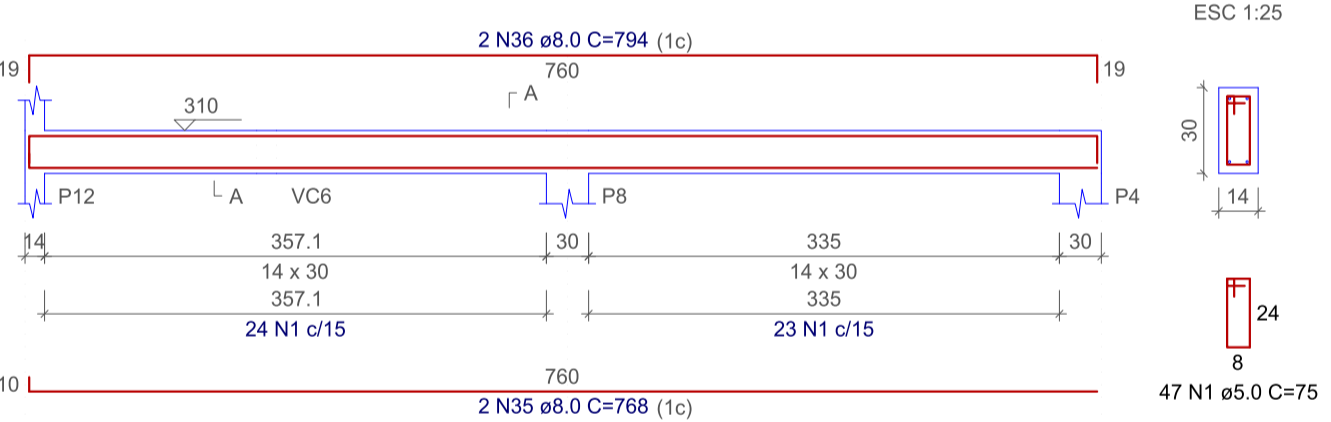
VC13
ESC 1:50



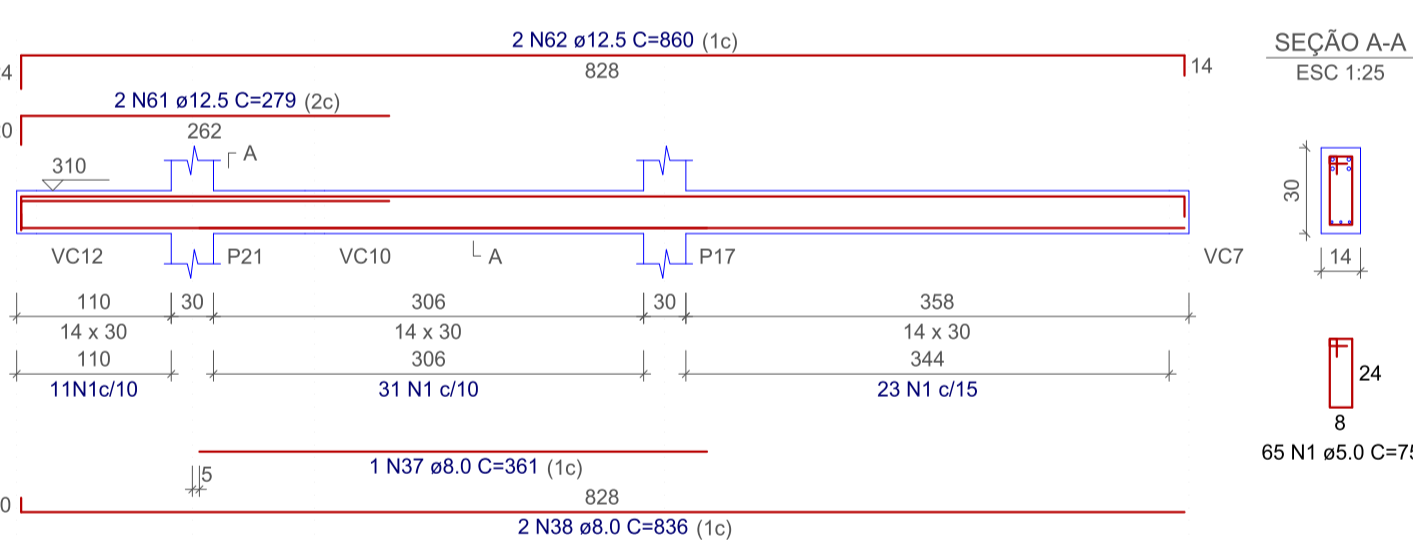
VC14
ESC 1:50



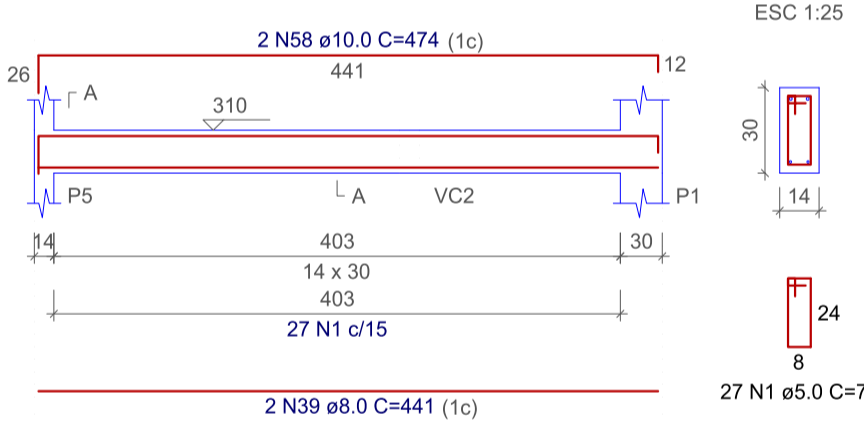
VC15
ESC 1:50



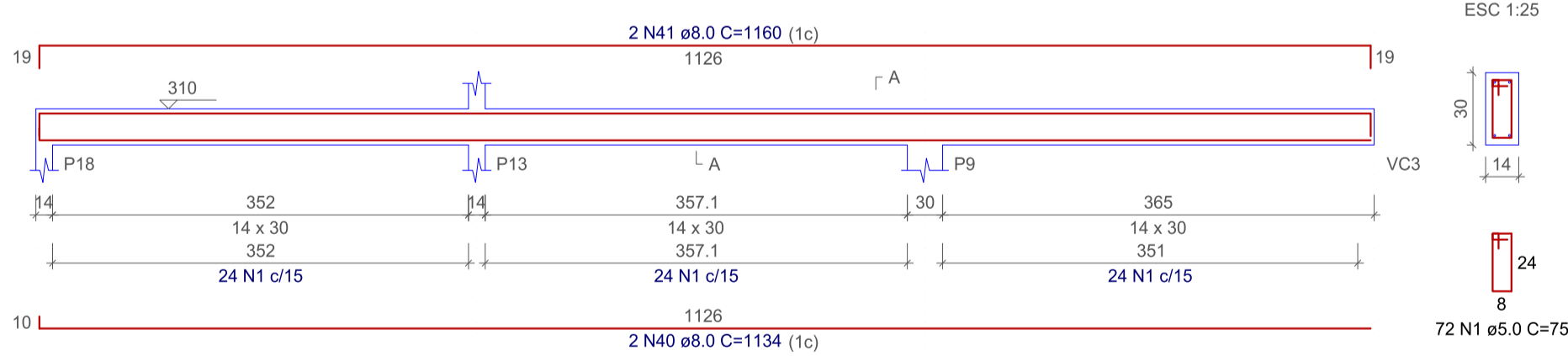
VC16
ESC 1:50



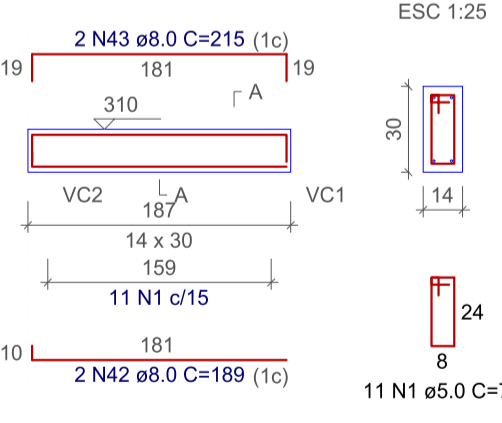
VC17
ESC 1:50



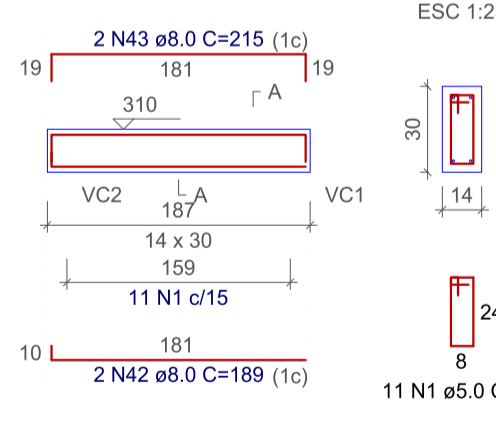
VC18
ESC 1:50



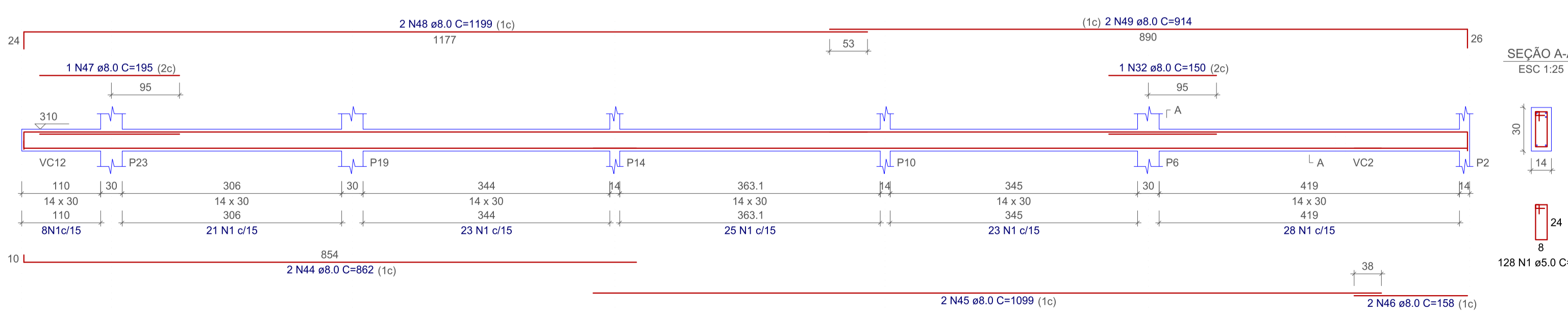
VC19
ESC 1:50



VC20
ESC 1:30



VC21
ESC 1:50



RELAÇÃO DO AÇO

AÇO	N	DIAM (mm)	QUANT	C.UNIT (cm)	C.TOTAL (cm)
CA60	1	5.0	906	75	67950
	2	5.0	2	385	770
	3	5.0	2	233	466
	4	5.0	2	393	786
	5	6.3	1	105	105
	6	8.0	2	444	888
	7	8.0	2	468	936
	8	8.0	2	479	958
	9	8.0	1	122	122
	10	8.0	2	493	986
	11	8.0	2	436	872
	12	8.0	2	462	924
	13	8.0	2	795	1590
	14	8.0	2	494	988
	15	8.0	2	231	462
	16	8.0	2	265	530
	17	8.0	4	622	2488
	18	8.0	1	125	125
	19	8.0	2	643	1286
	20	8.0	2	385	770
	21	8.0	2	639	1278
	22	8.0	2	86	172
	23	8.0	2	630	1260
	24	8.0	2	605	1210
	25	8.0	2	207	414
	26	8.0	2	277	554
	27	8.0	2	81	162
	28	8.0	2	209	418
	29	8.0	2	854	1708
	30	8.0	2	794	1588
	31	8.0	1	166	166
	32	8.0	2	150	300
	33	8.0	2	344	688
	34	8.0	2	375	750
	35	8.0	2	768	1536
	36	8.0	2	794	1588
	37	8.0	1	361	361
	38	8.0	2	836	1672
	39	8.0	2	441	882
	40	8.0	2	1134	2268
	41	8.0	2	1160	2320
	42	8.0	4	189	756
	43	8.0	4	215	860
	44	8.0	2	862	1724
	45	8.0	2	1099	2198
	46	8.0	2	158	316
	47	8.0	1	195	195
	48	8.0	2	1199	2398
	49	8.0	2	914	1828
	50	10.0	2	1120	2240
	51	10.0	2	200	400
	52	10.0	2	637	1274
	53	10.0	2	315	630
	54	10.0	1	185	185
	55	10.0	1	180	180
	56	10.0	2	1198	2396
	57	10.0	2	468	936
	58	10.0	2	474	948
	59	12.5	1	175	175
	60	12.5	2	230	460
	61	12.5	2	279	558
	62	12.5	2	860	1720

RESUMO DO AÇO

AÇO	DIAM (mm)	C.TOTAL (m)	PESO + 10% (kg)
CA50	6.3	1.1	0.3
	8.0	462.7	200.8
	10.0	91.9	62.3
	12.5	29.1	30.9
CA60	5.0	699.7	118.6
PESO TOTAL (kg)			
CA50		294.3	
CA60		118.6	

Volume de concreto (C-25) = 5.62 m³
Área de forma = 99.00 m²



Projeto Estrutural

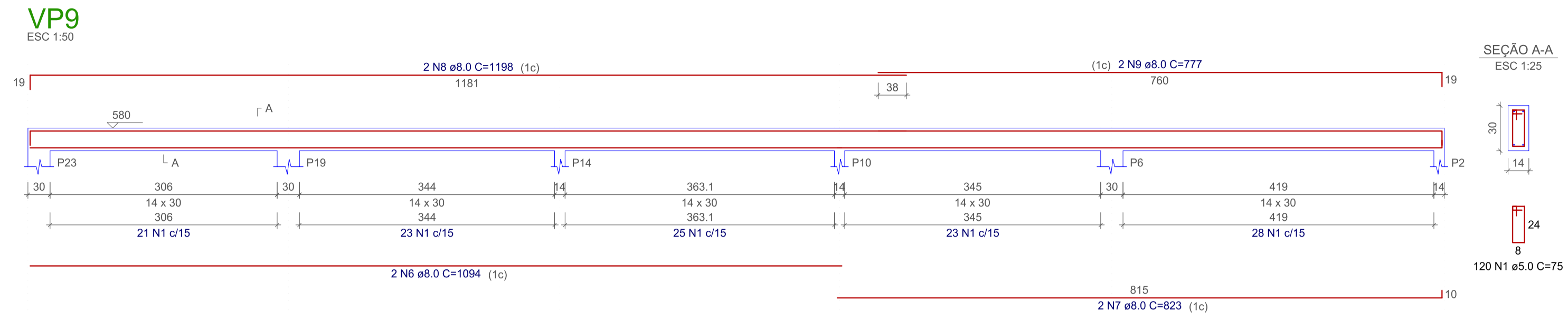
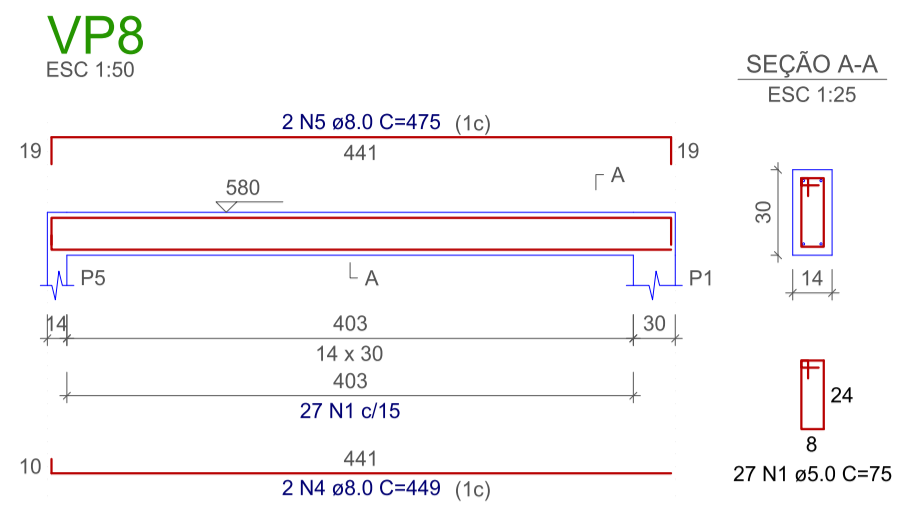
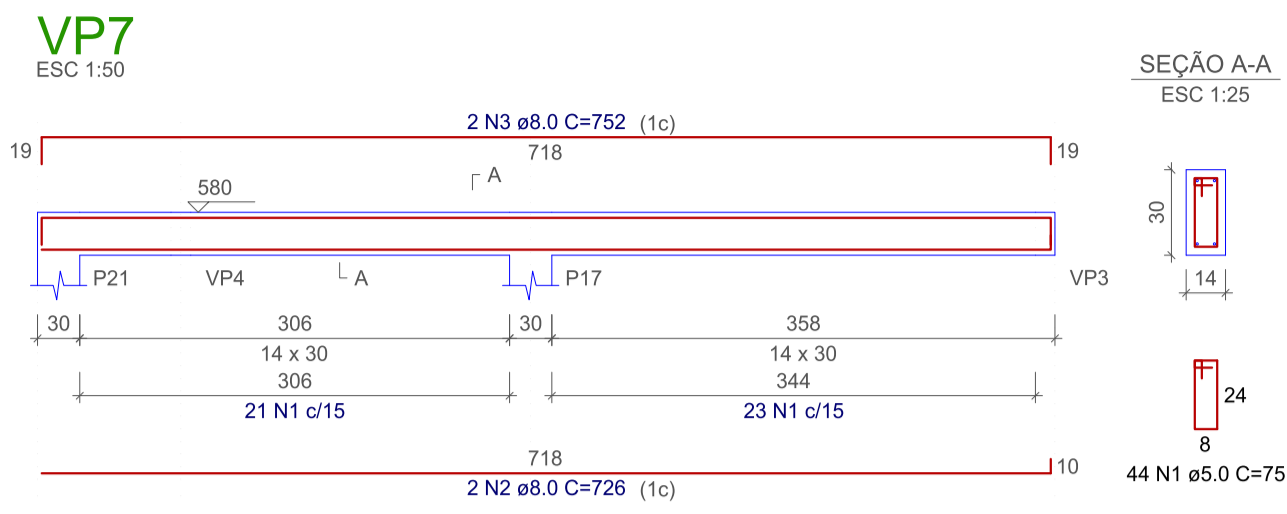
Projeto UBS Floresta do Araguaia - PA

PREFEITURA DE FLORESTA DO ARAGUAIA - PA

Autor do projeto: Lucas Oliveira Dantas
Engenheiro Civil:
CREA-PA 886058/D-PA

Conteúdo desta prancha: Vigas
Áreas:

Data: Setembro de 2023
Escala: Indicadas
Prancha: 05/07



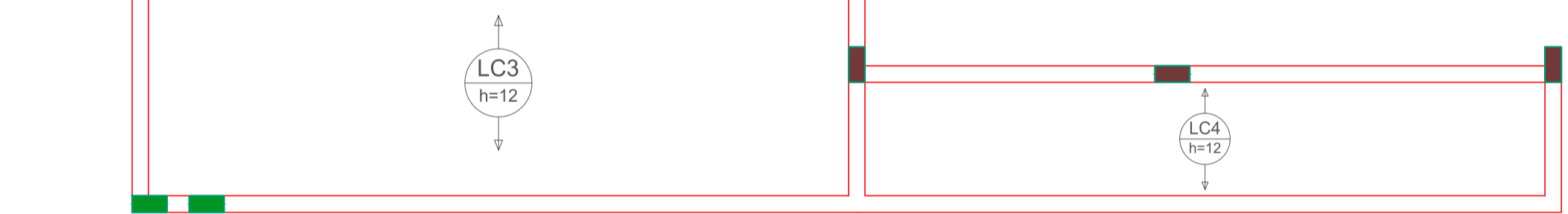
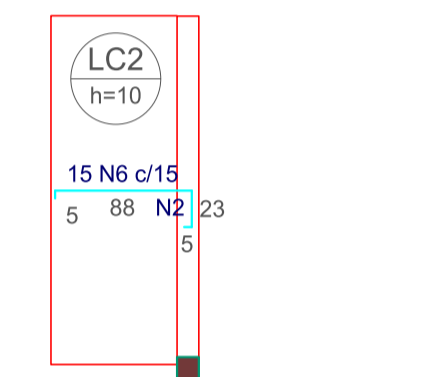
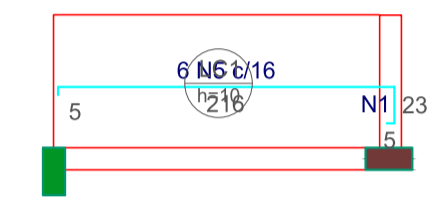
RELAÇÃO DO AÇO

VP7		VP8		VP9	
AÇO	N	DIAM (mm)	QUANT	C.UNIT (cm)	C.TOTAL (cm)
CA60	1	5.0	191	75	14325
CA50	2	8.0	2	726	1452
	3	8.0	2	752	1504
	4	8.0	2	449	898
	5	8.0	2	475	950
	6	8.0	2	1094	2188
	7	8.0	2	823	1646
	8	8.0	2	1198	2396
	9	8.0	2	777	1554

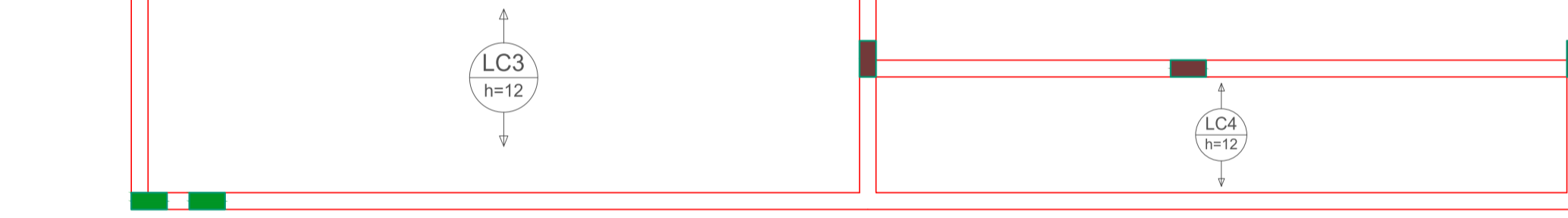
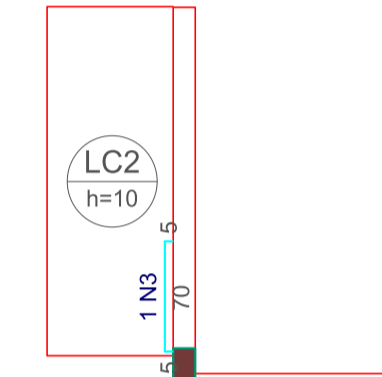
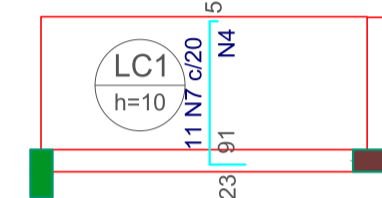
RESUMO DO AÇO

AÇO	DIAM (mm)	C.TOTAL (m)	PESO + 10% (kg)
CA50	8.0	125.9	54.6
CA60	5.0	143.3	24.3
PESO TOTAL (kg)			
CA50	54.6		
CA60	24.3		

Volume de concreto (C-25) = 1.29 m³
Área de forma = 22.79 m²



Armação negativa das lajes do pavimento Cobertura (Eixo X)
escala 1:50



Armação negativa das lajes do pavimento Cobertura (Eixo Y)
escala 1:50

Armaduras de distribuição

Armadura	Armadura de distribuição
N5	11 N1 ø5.0 c/20 C=91
N6	5 N2 ø5.0 c/20 C=220

Armaduras de distribuição

Armadura	Armadura de distribuição
N7	5 N4 ø5.0 c/20 C=216

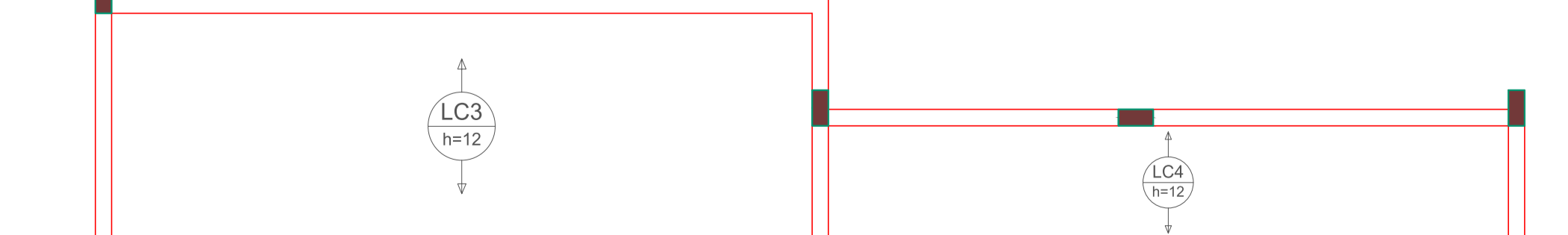
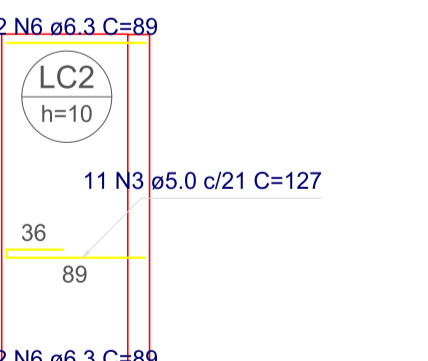
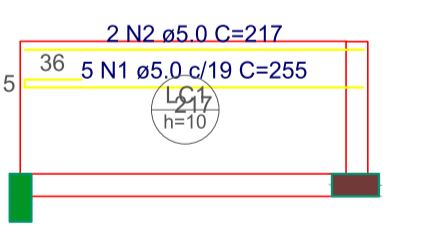
RELAÇÃO DO AÇO

Negativos X		Negativos Y			
AÇO	N	DIAM (mm)	QUANT	C.UNIT (cm)	C.TOTAL (cm)
CA60	1	5.0	11	91	1001
	2	5.0	5	220	1100
	3	5.0	1	77	77
	4	5.0	5	216	1080
CA50	5	6.3	6	245	1470
	6	6.3	15	117	1755
	7	6.3	11	116	1276

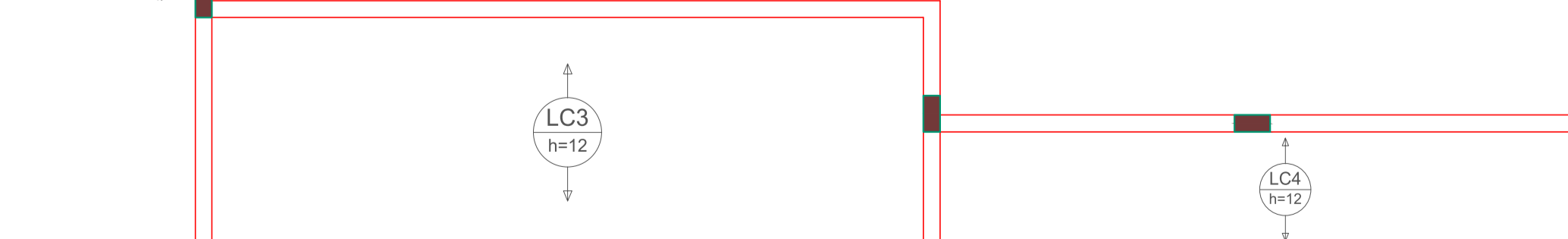
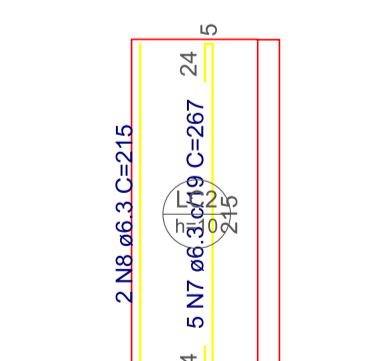
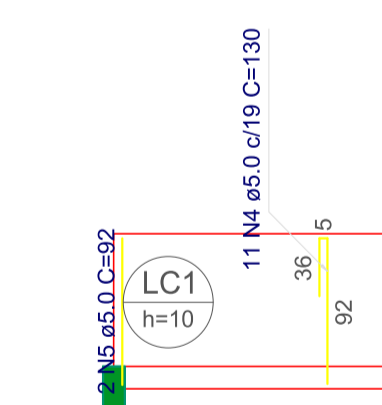
RESUMO DO AÇO

AÇO	DIAM (mm)	C.TOTAL (m)	PESO + 10% (kg)
CA50	6.3	45	12.1
CA60	5.0	32.6	5.5
PESO TOTAL (kg)			
CA50	12.1		
CA60	5.5		

Volume de concreto (C-25) = 0.00 m³
Área de forma = 0.00 m²



Armação positiva das lajes do pavimento Cobertura (Eixo X)
escala 1:50



Armação positiva das lajes do pavimento Cobertura (Eixo Y)
escala 1:50

RELAÇÃO DO AÇO

Positivos X		Positivos Y			
AÇO	N	DIAM (mm)	QUANT	C.UNIT (cm)	C.TOTAL (cm)
CA60	1	5.0	5	255	1275
	2	5.0	2	217	434
	3	5.0	11	127	1397
	4	5.0	11	130	1430
	5	5.0	2	92	184
CA50	6	6.3	4	89	356
	7	6.3	5	267	1335
	8	6.3	2	215	430

RESUMO DO AÇO

AÇO	DIAM (mm)	C.TOTAL (m)	PESO + 10% (kg)
CA50	6.3	21.2	5.7
CA60	5.0	47.2	8
PESO TOTAL (kg)			
CA50	5.7		
CA60	8		

Volume de concreto (C-25) = 1.04 m³
Área de forma = 4.22 m²



Projeto Estrutural

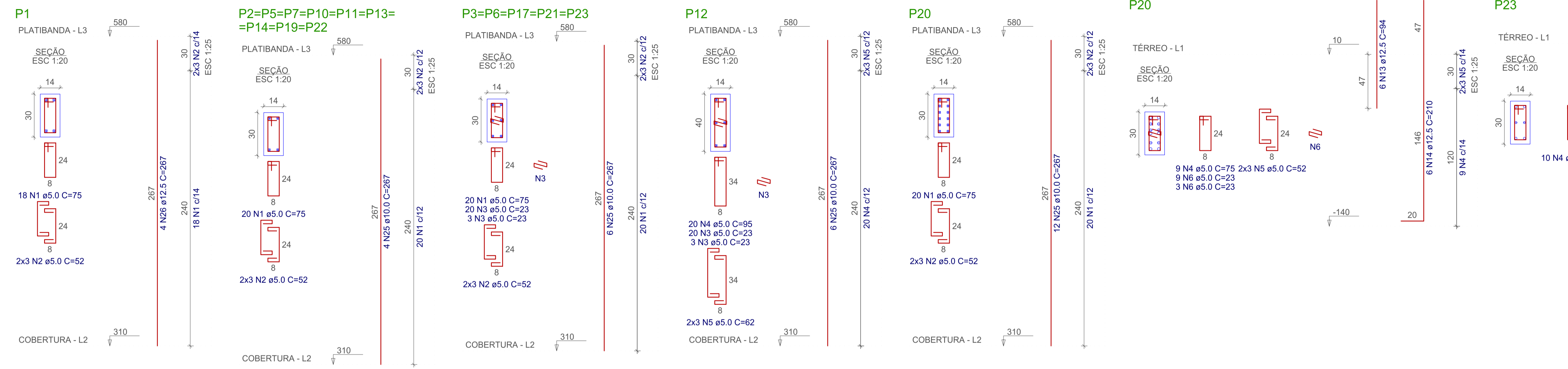
Projeto UBS Floresta do Araguaia - PA

PREFEITURA DE FLORESTA DO ARAGUAIA - PA

Autor do projeto: Lucas Oliveira Dantas
Engenheiro Civil:
CREA-PA 886058/D-PA

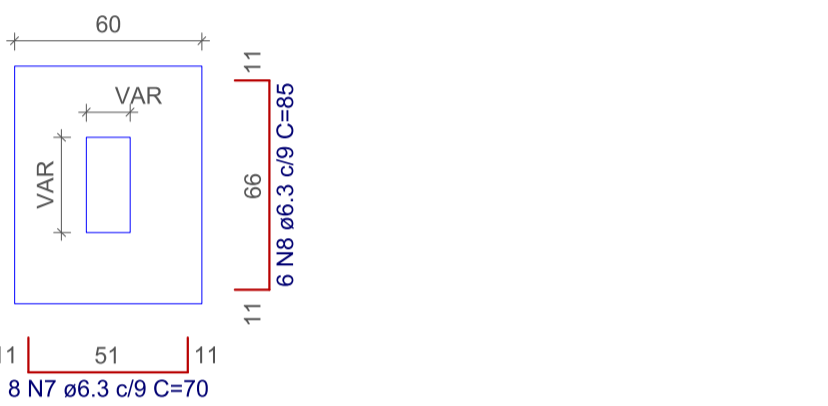
Conteúdo desta prancha: Formas e Vigas

Data: Setembro de 2023
Escala: Indicadas
Prancha: 06/07



S1=S2=S3=S4=S6=S7=S8=S9=S10=S11=S13=S14
=S15=S16=S17=S18=S19=S20=S22=S23

PLANTA ESC 1:25

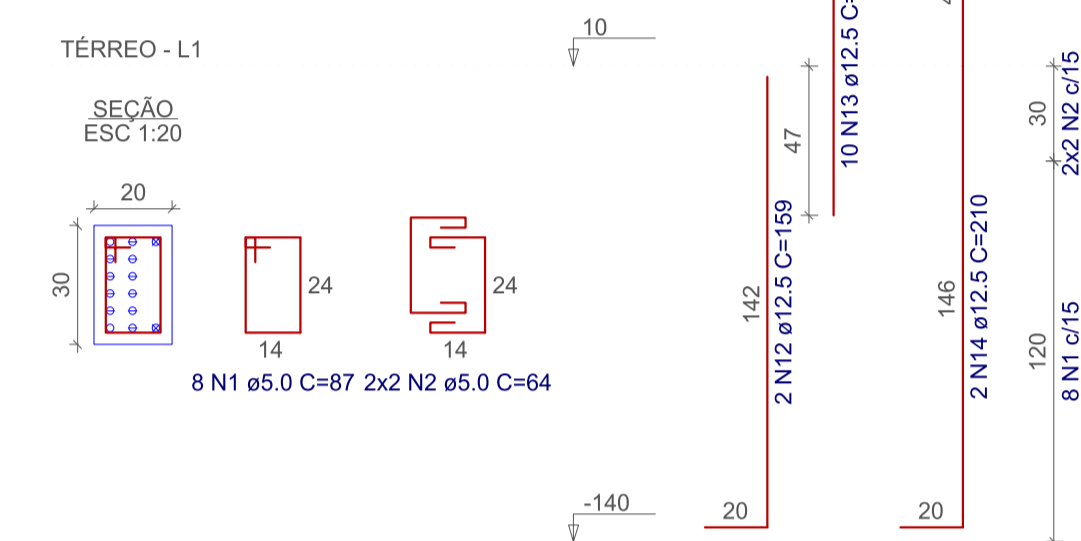


Solo com capacidade de suporte > 2.50 kgf/cm²
Solo compactado sobre a sapata
peso específico > 1600.00 kgf/m³

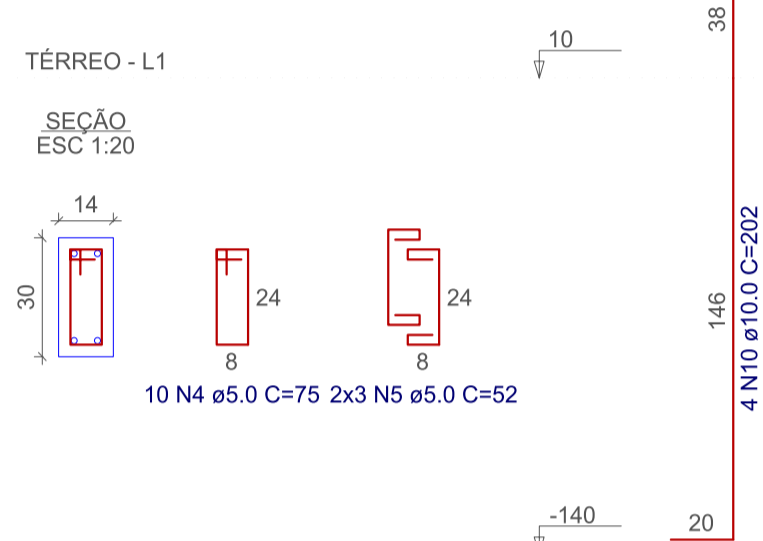
CORTE ESC 1:25



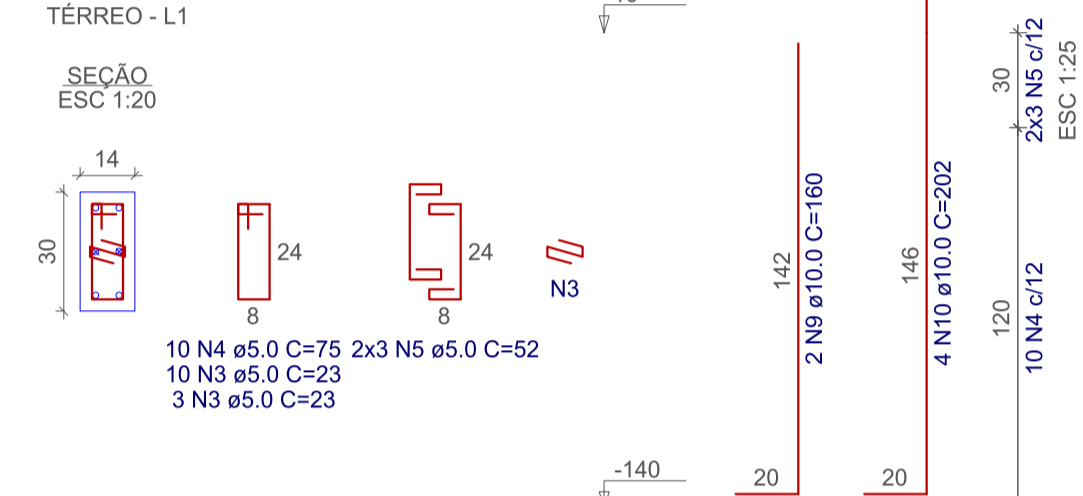
P1



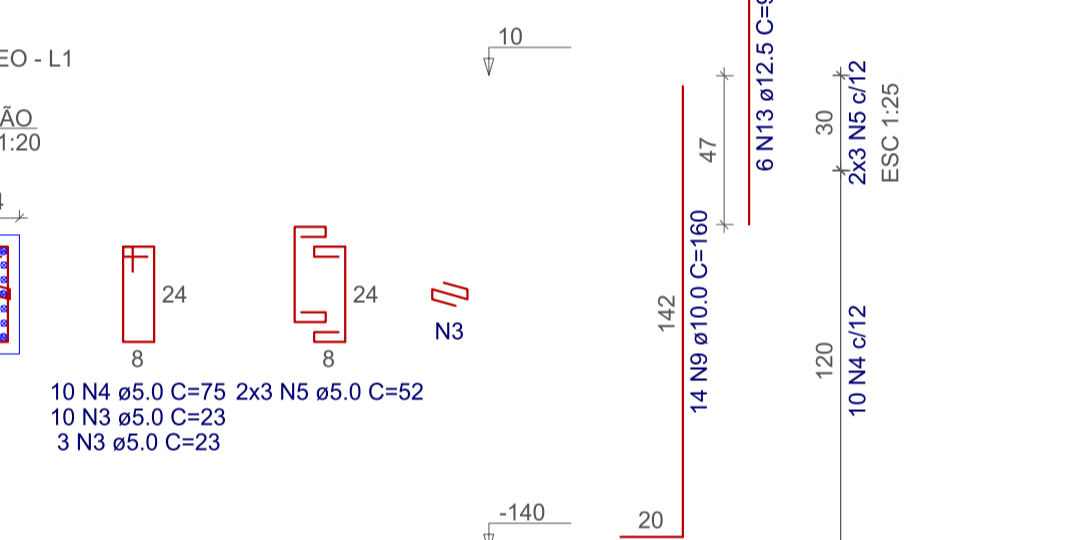
P10=P13=P14=P15=P22



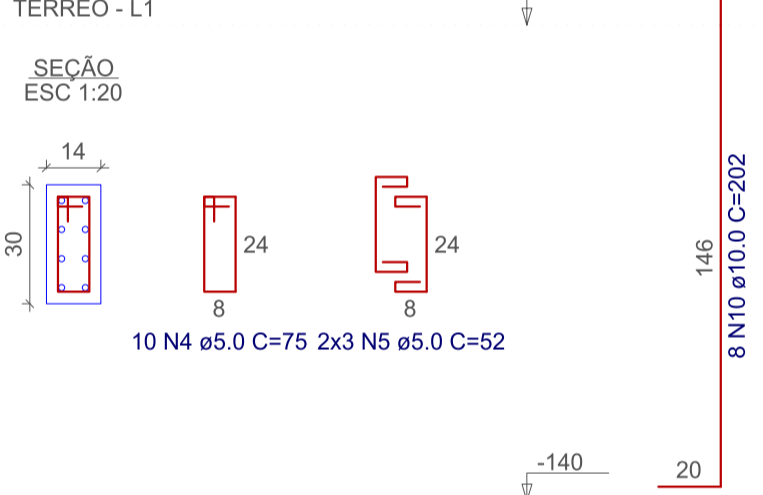
P17=P19



P2=P6



P9



RELAÇÃO DO AÇO

AÇO	N	DIAM (mm)	QUANT	C.UNIT (cm)	C.TOTAL (cm)
CA60	1	5.0	8	87	696
	2	5.0	4	64	256
	3	5.0	104	23	2392
	4	5.0	189	75	14175
	5	5.0	114	52	5928
	6	5.0	12	23	276
CA50	7	6.3	160	70	11200
	8	6.3	120	85	10200
	9	10.0	40	160	6400
	10	10.0	88	202	17776
	11	10.0	2	75	150
	12	12.5	2	159	318
	13	12.5	28	94	2632
	14	12.5	8	210	1680

RELAÇÃO DO AÇO

AÇO	N	DIAM (mm)	QUANT	C.UNIT (cm)	C.TOTAL (cm)
CA60	1	5.0	636	75	47700
	2	5.0	96	52	4992
	3	5.0	138	23	3174
	4	5.0	20	85	1900
	5	5.0	6	62	372
	6	5.0	2	370	740
CA50	7	5.0	2	239	478
	8	5.0	2	584	1168
	9	8.0	2	627	1254
	10	8.0	2	658	1316
	11	8.0	2	690	1380
	12	8.0	2	795	1590
	13	8.0	2	494	988
	14	8.0	2	1118	2236
	15	8.0	2	177	354
	16	8.0	2	623	1246
	17	8.0	2	226	452
	18	8.0	2	81	162
	19	8.0	2	622	1244
	20	8.0	2	640	1280
21	8.0	2	1034	2068	
22	8.0	2	401	802	
23	8.0	2	219	438	
24	8.0	2	974	1942	
25	10.0	4	267	22428	
26	12.5	4	267	1068	

RESUMO DO AÇO

AÇO	DIAM (mm)	C.TOTAL (m)	PESO + 10% (kg)
CA50	6.3	214	57.6
	10.0	243.3	165
	12.5	46.3	49.1
CA60	5.0	237.2	40.2
PESO TOTAL (kg)			
CA50		271.6	
CA60		40.2	

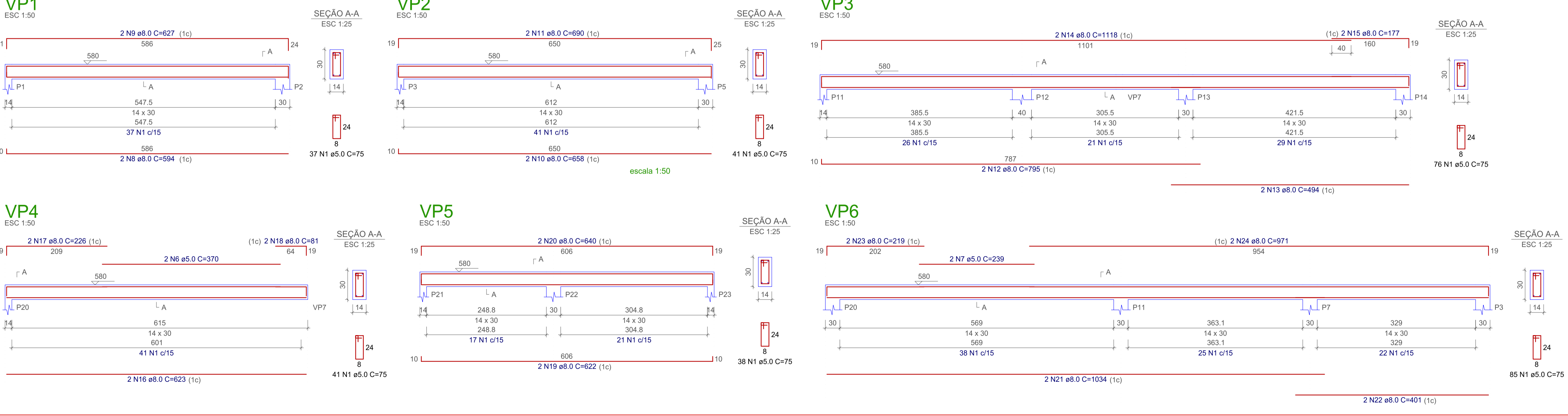
Volume de concreto (C-25) = 3.09 m³
Área de forma = 37.38 m²

RESUMO DO AÇO

AÇO	DIAM (mm)	C.TOTAL (m)	PESO + 10% (kg)
CA50	8.0	199.4	86.5
	10.0	224.3	152.1
	12.5	10.7	11.3
CA60	5.0	593.6	100.6
PESO TOTAL (kg)			
CA50		250	
CA60		100.6	

Volume de concreto (C-25) = 4.11 m³
Área de forma = 78.64 m²

Planta de vigotas pré-moldadas



Projeto Estrutural
Projeto UBS Floresta do Araguaia - PA

PREFEITURA DE FLORESTA DO ARAGUAIA - PA

Autor do projeto: Lucas Oliveira Dantas
Engenheiro Civil:
CREA-PA 886058/D-PA

Conteúdo desta prancha: Áreas:
Fundação: Pilares e Vigas

Data: Setembro de 2023
Escala: Indicadas
Prancha: 07/07